

• *Quality Truck
Equipment*



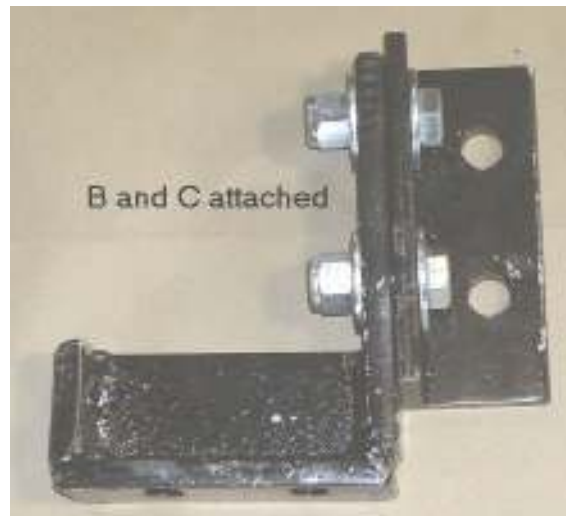
• *Heavy Duty
Truck Repairs*

Installation of Frame Plates on A-1

(A-1: 1996 and prior)

1) Installing frames plates on model M998 use parts labeled A, D, and E parts

- ◆ Remove parts labeled B and C for this application



2) Remove front shackles on front bumper.

- ◆ Discard the bolts.
- ◆ Save the shackles for re-installation.

3) Remove the two ½" x 3-1/2" bolts holding the inner fender bracket to the frame on each side.

- ◆ Discard the bolts.

4) Lift the push plates up and into place.

- ◆ Using the holes in the bumper and holes in the front push plate's install the front shackles using the ½" x 2 ½" bolts, washers, and locknut provided through the push plates and into the existing shackle holes.
- ◇ Use an SAE washer on the bolt head side of the bracket and a flat washer on the locknut side.

5) Bracket D will fit behind the inner fender bracket and will bolt to the frame using the provided ½" x 5" bolts, washer's and, locknuts.

- ◆ Use an SAE washer on the bolt head side and a flat washer on the locknut side

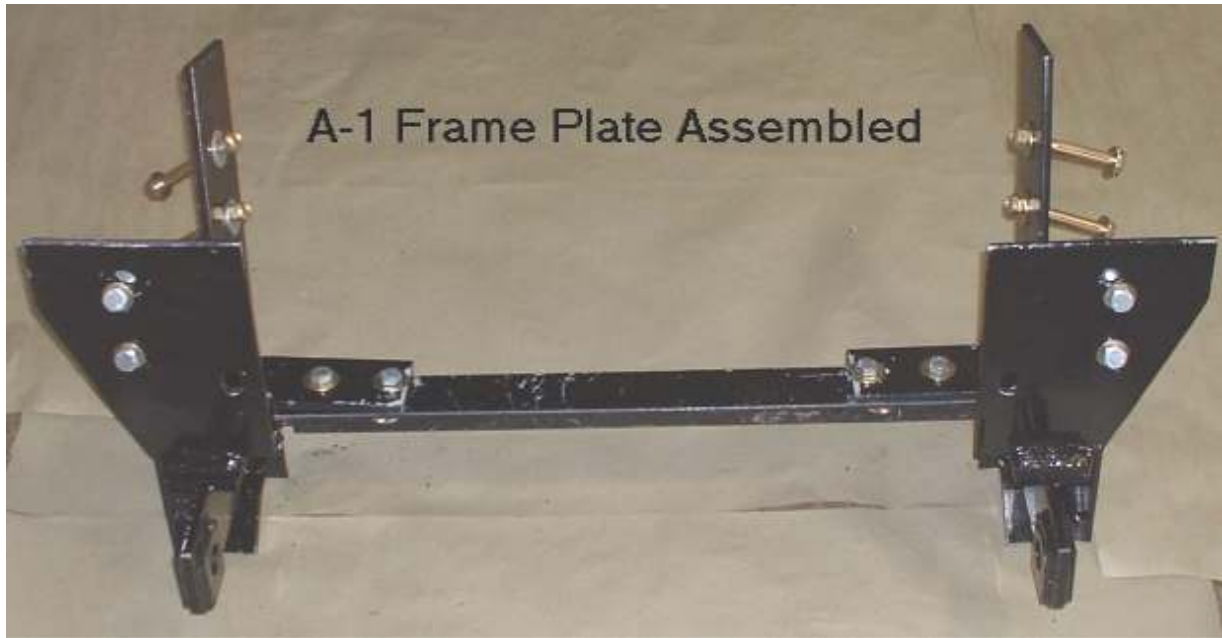
6) Install cross beam E between push plates.

- ◆ Fit the cross beam to the inside of the push plate angles.
- ◆ Use the provided ½" x 1 ½" bolts, flat washers and lock nuts.

After installing push plates and cross beam tighten all fasteners at this time.

HARDWARE COUNT

4	½" X 5" Bolt
8	½" x 1-1/2" Bolt
4	½" x 2" Bolt
18	½" Lock Nut
8	½" SAE Washer
20	½" Flat Washer



A-1 Frame Plate Assembled

· I-87, EXIT 18 · 106 LUZERNE ROAD · QUEENSBURY, NY 12804
· PHONE {518} 793-2265 · FAX {518} 793-2597