



SERVICE BODIES



www.knapheide.com

YOUR WORK. YOUR VEHICLE. TRUST



KNAPHEIDE SERVICE BODIES

With a rugged steel construction and external storage for your tools and equipment, the Service Body is a key component in your day-to-day productivity.

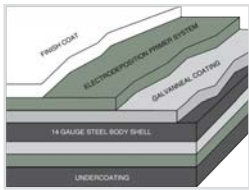
The external compartments offer protection from outside elements and allow the technician to access their equipment without having to climb into the truck bed.

Staying organized both on and between job sites is important. Get maximum efficiency with a Knapheide Service Body.



NO MATTER WHAT
SERVICE BODY FOR YOU
YOU OFFER, WE'VE GOT THE
KNAPHEIDE SERVICE BODIES

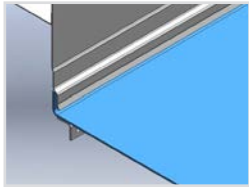
STANDARD FEATURES



A Our Service Bodies are comprised of a rugged 14 gauge two-sided A-40 galvaneal steel shell with a six year warranty. Complete undercoating provides an additional layer of corrosion protection.



H Double-shell, 20 gauge, two sided A-40 galvaneal steel compartment doors with internal reinforcements ensure durability and long life.



B Our exclusive "Return Flange" floor design provides support for side compartments, adds floor strength, and eliminates the rust-prone exposed seam between floor and side compartments.



I Refined, automotive quality, paddle activated, rotary style latches make opening and closing easy. Low maintenance and stylish, the latches are covered under Knapheide's six year warranty.



C Interior light guards provide protection for recessed lighting and wiring package.



J The latch's interior cover secures the latch to the door and protects the internal latch mechanisms from being damaged.



D Our continuous, pry-proof, stainless steel hinge for unmatched security and corrosion resistance, backed by Knapheide's six year warranty.



K Thick automotive bulb-type neoprene door seals protect compartments from the weather.



E Adjustable security ring strikers provide strength, security and a weather tight seal throughout the entire life of the body.



L Quick mount installation permits quick, safe mounting of the body and bumper and allows for easy transfer from chassis to chassis (meets FMVSS301 requirements).



F Bodies include 250 lb. capacity adjustable divider shelves made of rugged, spangled, galvanized steel. Divider slots are present on 4" centers. These shelves are covered through Knapheide's six year warranty.



M Our Service Bodies include a slam lock tailgate with a one hand center release for convenience. The tailgate's durable, double panel construction has a flat interior surface for work bench use.



G The double spring over-center door retainer present on all vertical doors eliminates involuntary swing and keeps the door in positive open or closed position. This efficient design works in all temperatures and conditions.



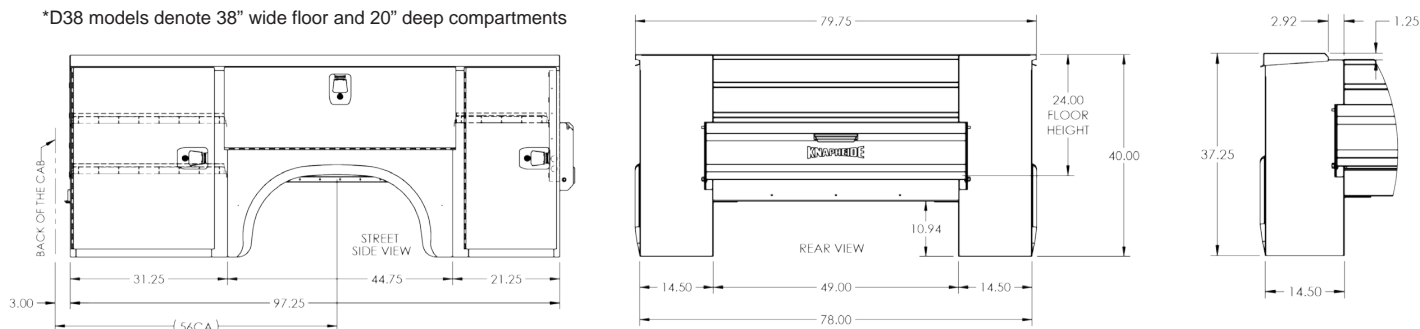
N Complete immersion in Knapheide's electrodeposition prime paint system ensures primer coverage in hard to reach areas, resulting in superior corrosion resistance.

56" CA SINGLE REAR WHEEL

Model	Type	Height (H)	Weight
696J	Standard	40"	1,215 lb.
696LPJ	Low Profile	36"	1,163 lb.
696FJ	Flip Top (L)	37.25"	1,287 lb.
696FJ40	Flip Top (H)	41.25"	1,338 lb.
696D38J*	Standard	40"	1,256 lb.
696D38LPJ*	Low Profile	36"	1,203 lb.
696D38FJ*	Flip Top	37.25"	1,326 lb.

*D38 models denote 38" wide floor and 20" deep compartments

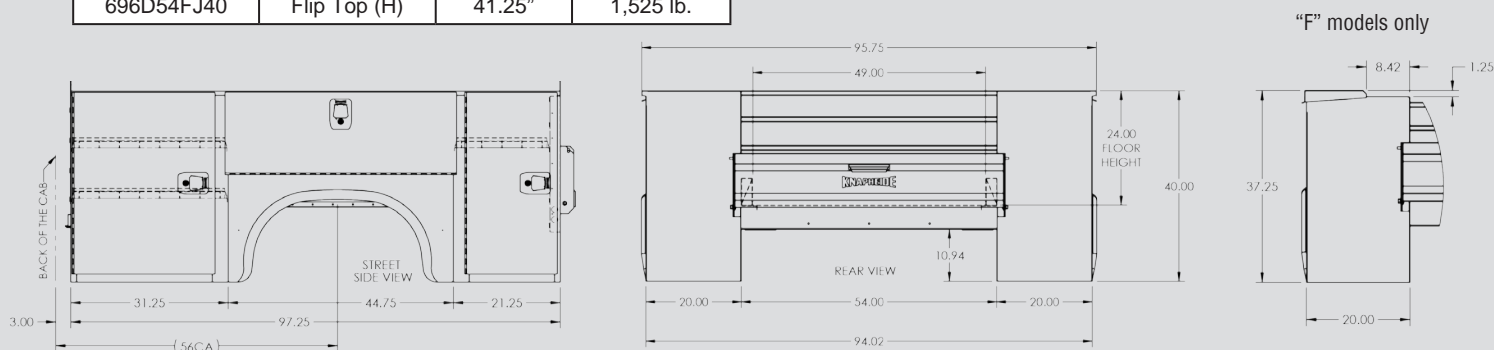
Truck	Cab	Wheelbase	GVWR
2500	Regular	140.5"	8,650/9,000 lb.
2500	Crew	169.5"	8,800/9,000 lb.
3500	Crew	169.5"	10,100 lb.



56" CA DUAL REAR WHEEL

Model	Type	Height (H)	Weight
696D54J	Standard	40"	1,402 lb.
696D54LPJ	Low Profile	36"	1,347 lb.
696D54FJ	Flip Top (L)	37.25"	1,470 lb.
696D54FJ40	Flip Top (H)	41.25"	1,525 lb.

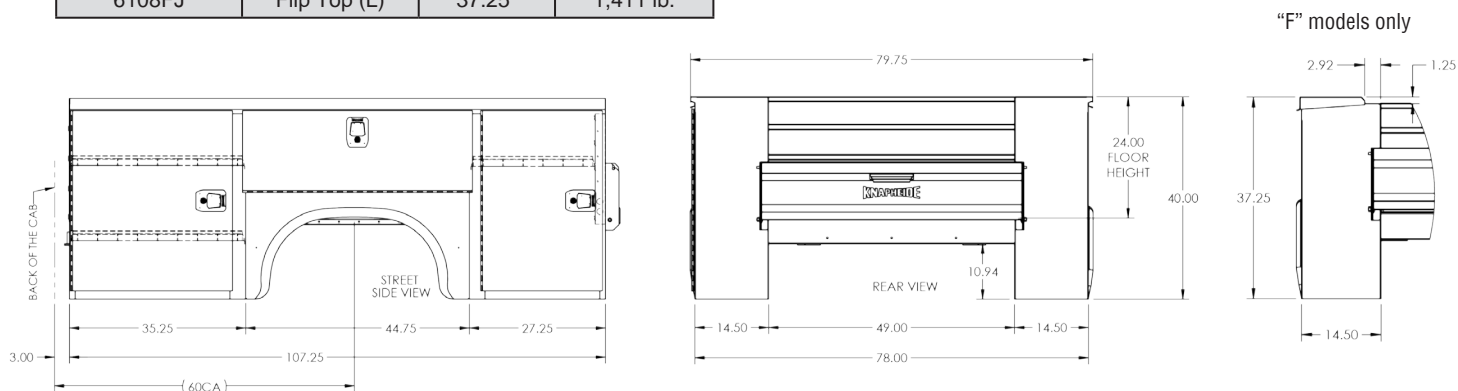
Truck	Cab	Wheelbase	GVWR
3500	Crew	169.5"	12,300 lb.
3500	Regular	140.5"	12,200 lb.



60" CA SINGLE REAR WHEEL

Model	Type	Height (H)	Weight
6108J	Standard	40"	1,338 lb.
6108LPJ	Low Profile	36"	1,276 lb.
6108FJ	Flip Top (L)	37.25"	1,411 lb.

Truck	Cab	Wheelbase	GVWR
3500	Regular	143.5"	10,200 lb.
3500	Crew	172.4"	10,200 lb.



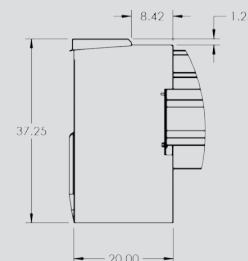
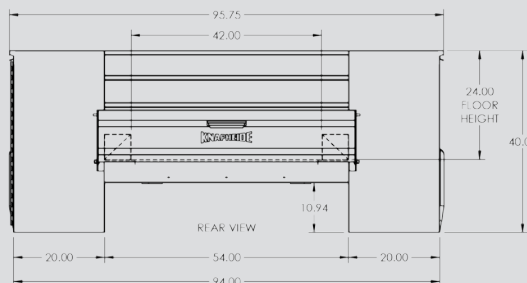
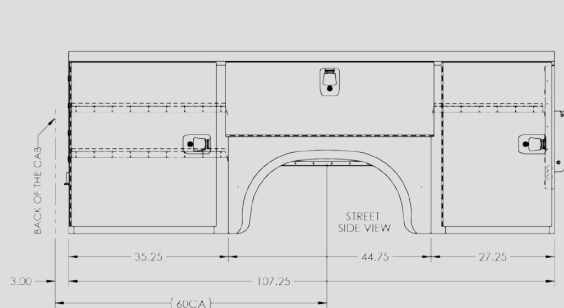
60" CA DUAL REAR WHEEL

Model	Type	Height (H)	Weight
6108D54J	Standard	40"	1,508 lb.
6108D54LPJ	Low Profile	36"	1,445 lb.
6108D54FJ	Flip Top (L)	37.25"	1,580 lb.
6108D54FJ40	Flip Top (H)	41.25"	1,643 lb.
6108XWJ*	Standard	40"	1,473 lb.
6108XWFJ*	Flip Top (L)	37.25"	1,544 lb.

*XW models denote 65" wide floor and 14.5" deep compartments

Truck	Cab	Wheelbase	GVWR
3500	Regular	143.5"	12,500/13,000 lb.
3500	Crew	172.4"	12,500/13,000 lb.
4500	Regular	144.5"	15,000/16,000 lb.
4500	Crew	173.5"	15,000/16,000 lb.
5500	Regular	144.5"	18,750 lb.
5500	Crew	173.4"	18,750 lb.

"F" models only



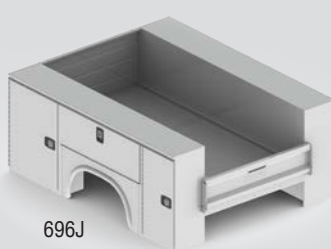
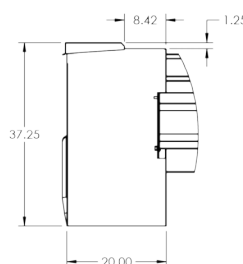
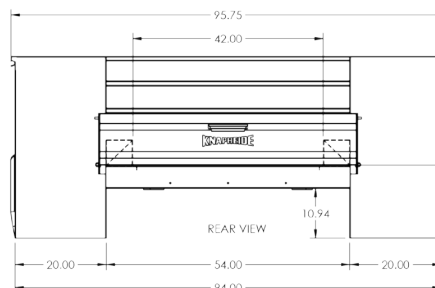
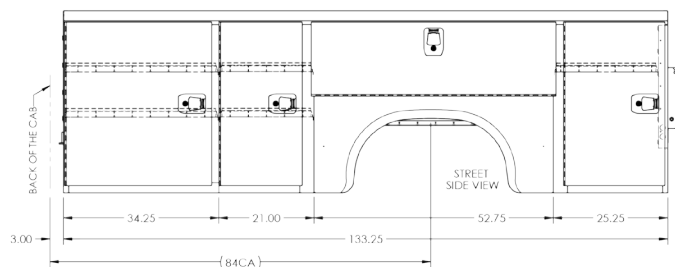
84" CA DUAL REAR WHEEL

Model	Type	Height (H)	Weight
6132D54J	Standard	40"	1,818 lb.
6132D54LPJ	Low Profile	36"	1,740 lb.
6132D54FJ	Flip Top (L)	37.25"	1,904 lb.
6132D54FJ40	Flip Top (H)	41.25"	1,982 lb.
6132XWJ*	Standard	40"	1,769 lb.

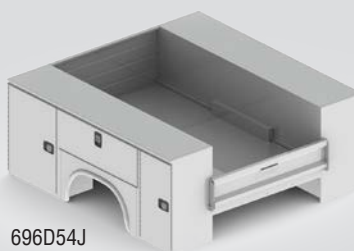
*XW models denote 65" wide floor and 14.5" deep compartments

Truck	Cab	Wheelbase	GVWR
3500	Regular	167.5"	12,500/13,000 lb.
4500	Regular	168.5"	15,000/16,500 lb.
4500	Crew	197.4"	15,000/16,500 lb.
5500	Regular	168.5"	19,500 lb.
5500	Crew	197.4"	19,500 lb.

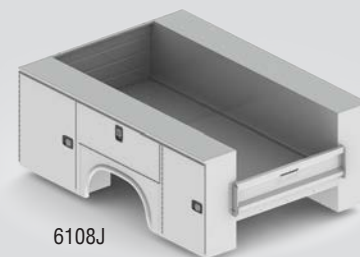
"F" models only



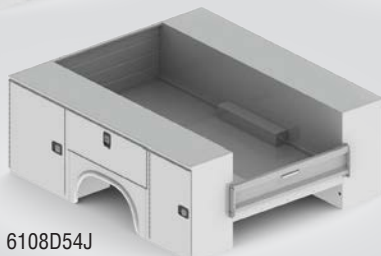
696J



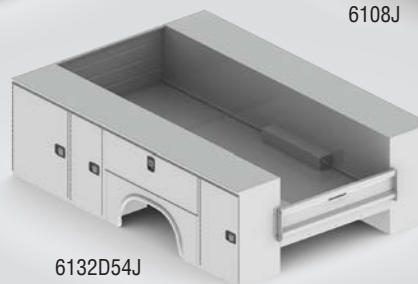
696D54J



6108J



6108D54J



6132D54J

COMPARTMENT CONFIGURATIONS



500 SERIES COMPARTMENTS

The 500 Series Service Bodies feature a horizontal compartment that stretches from the first vertical compartment to the end of the body with a small, rear lower compartment. 500 Series compartment configurations are available for most Service Body models.



600 SERIES COMPARTMENTS

The 600 Series Service Bodies feature a horizontal compartment that is positioned over the wheel well and one vertical compartment in the front of the body and one at the rear of the body. 600 Series compartment configurations are available for most Service Body models.

700 SERIES COMPARTMENTS

The 700 Series has 500 Series configuration on the curb side and 600 Series on the street side.

LOW PROFILE BODY



Low Profile Bodies offer greater visibility from the cab while only sacrificing 4" of the body height compared to a standard Service Body.

Low Profile Bodies are denoted by "LPJ" within the body model.

STANDARD SHELVING



All Knapheide Service Bodies come with the following standard shelving units:

- Two adjustable divider shelves and dividers, in the street and curb side front vertical compartments (1st and 2nd vertical 132" bodies only)
- One adjustable divider shelf and dividers, in the street and curb side full height rear vertical compartments
- One adjustable divider shelf and dividers, in the curb side horizontal compartments

PLUS 50 COMPARTMENTS

Plus 50 models feature a transverse compartment in curb side front vertical extending to street side compartment back.

Plus 50 models have 50% more effective storage capacity.

- 40" high bodies have a (3) drawer unit with 8.5" high tunnel under drawers.
- 36" and 37.25" high bodies have a (2) drawer unit with 8" high tunnel under drawers.
- W and D54 models have 69" long drawers with 46" extension. All other models have 59" long drawers with 41" extension.
- Drawers are 24" wide (20" clear) and 3" high and are removable.
- Ball bearing drawer guides for ease of movement.
- Drawers are 250 lb. rated.
- Drawers have hemmed dividers on 4" centers.



FLIP TOP COMPARTMENTS



Flip Tops allow for greater internal storage organization and flexibility. Knapheide's Flip Tops have a slammable top lid door and a convenient one hand release located in the horizontal compartment.

Two hydraulic cylinders ensure the flip top remains in the open position.

Flip Tops are denoted by "FJ" within the Service Body model. Flip Tops are available on most Knapheide Service Bodies.

RAISED FRONT COMPARTMENTS



Raised front vertical compartments are 60" tall and come with an automotive style rivetless rotary latch and double spring over-center door retainers.

Standard raised front vertical compartments are located on the curb side for operator safety.

Bottle gas retainers are optional for the raised front vertical compartments.

POPULAR OPTIONS



Power Locks



Aluminum Tread Plate Trim



Master Locking System



Steel Mechanic Drawers



Sortimo



Rock Guards



Aluminum Mechanics Drawers



Cargo Tie Downs



LED Compartment Lighting



Wheel Chock Holders



T-Handles



LED Lights



Knapliner Bumper



Class V Receiver



Telescopic Roof



Knapheide Utility Rack



Overhead Ladder Rack



Side Mount Ladder Rack



COMMITMENT TO CORROSION RESISTANCE

Corrosion shouldn't be a concern when you buy quality Knapheide products. To give you the best protection from corrosion, we installed our state-of-the-art, custom-designed electrodeposition prime paint system. Our E-coat system bonds prime paint to steel by an electroplating process, to give you a superior coat of primer resulting in better corrosion protection compared to spraying methods. Complete immersion in our E-coat results in a prime coat that provides the best chemical and solvent resistance. Because of our commitment to corrosion resistance, you should never worry about the quality of your Knapheide products.



- No Rust Through
- Door Hinges will Not Fail or Come Off Body
- Latches and Lock Cylinders will Not Fail to Operate
- Shelves will Not Bend under Max. Load of 250lbs.



SINCE 1848

The Knapheide Manufacturing Company
1848 Westphalia Strasse | Quincy, Illinois 62305

(217) 222-7131

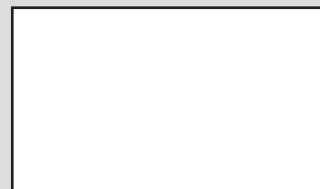


www.knapheide.com



knapheide@knapheide.com

For more information:



Specifications subject to change without notice.
Some models shown with optional equipment.



Since 1848, The Knapheide Manufacturing Company has continued to be an industry leader, with a vast distribution network and expert staff ready to help.