



DEJANA[®]
Truck and Utility Equipment

Options & Accessories



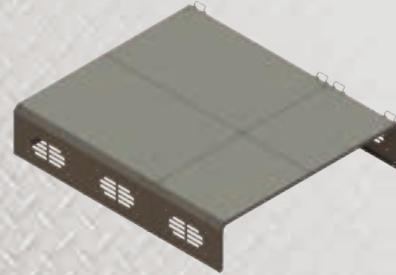
2-Piece Rear Door

Full height solid barn doors
14 ga. panel thickness
(3) 7 ga. hinges per door
270 degree door swing
w/lanyard style hold-backs



3-Piece Rear Door

Dumping tailgate w/vented barn doors
DynaPro style tailgate latches
14 ga. panel thickness
(2) 7ga. hinges per door
270 degree door swing
w/lanyard style hold-backs



Bolt-on Chipper Top

Available for both 9.5' and 12'
standard & heavy duty landscapers



Bolt-on Full Cab Shield

Available for Solid Side only

42" Forward distance
Height adjustable for all cab types



Bolt-on Aluminum Tarp Housing

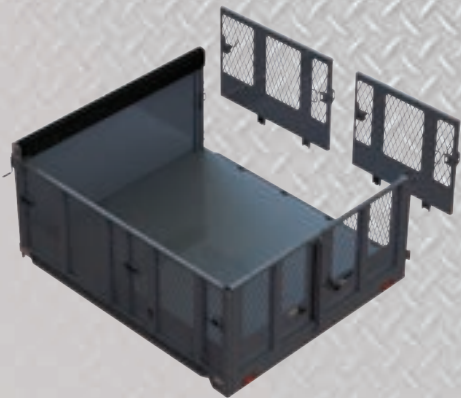
Includes tarp bar retaining hooks for
rear of body



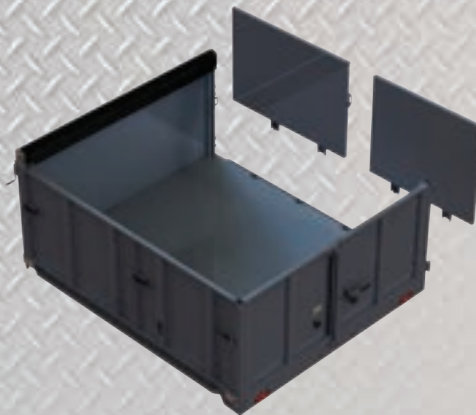
Bolt-on Underbody Access Ladder

Located under curbside access
door

Removable Rack Bodies Also available



Vented Rack Body - VRL



Solid Rack Body - SRL



Solid Side, Vented or Solid Rack
LANDSCAPERS



General Specifications

- Available in 9.5' & 12' lengths
- 96" body width
- Available in 40" and 48" side heights
- Interior usable length: 116" (9.5') and 146" (12')
- 50" curbside door opening
- ASTM A572 GR50 alloy steel
- Black semi-gloss powder-coat
- Pre-punched accessory holes
- New ergonomic hand-held controller standard
- 9" formed 7 ga. long sills, interlaced understructure
- 4" formed 10 ga. cross-members on 12" centers
- 10 ga. smooth steel floor
- 14 ga. side walls & bulkhead



Electrical Specifications

- (2) 6" oval LED grommet mounted S/T/T/R tail lights
- (11) 3/4" round LED marker lights per FMVSS 108
- (7) red, (4) amber



Ergonomic Handheld Controller

Standard Duty Landscaper

Length	Side Height	Interior Usable Length	Side Type
9.5'	40"	116"	14 ga. one-piece welded
	48"		
12'	40"	146"	14 ga. one-piece welded
	48"		

Heavy Duty Landscaper

Length	Side Height	Interior Usable Length	Side Type
12'	48"	146"	10 ga. one-piece welded
14'	48"	170"	10 ga. one-piece welded

Heavy Duty Fully Welded Body

- 10 ga. side walls & bulkhead
- Understructure type:
 - 12' : interlaced
 - 14' : stacked cross-member
- Interchangeable rear door options:
 - 2 Piece (full height solid barn doors)
 - 3 Piece (dumping tailgate with vented barn doors)
- Single stage painted black (standard)
- 180 degree swing curbside access door
 - 50" w opening
 - 12 ga. panel thickness
 - 12 ga. vertical support

