



*DRW

DuraCUBE[®]

Dejana's DuraCube[®] Bodies are designed for cutaway applications and are available for both Single Rear Wheel (SRW) and Dual Rear Wheel (DRW) chassis. SRW body styles are available in 10' & 12' lengths and DRW body styles are available in 10', 12', 14', 15', 16' and 17' lengths. There are seven models of models to choose from with inside heights up to 96".

Our DuraCube Cargo Van comes standard with a ½" FRP front wall and an interior cargo to cab access door. Wind faring for stand-up walk through or attic front is also available as an option on the 84" high body.

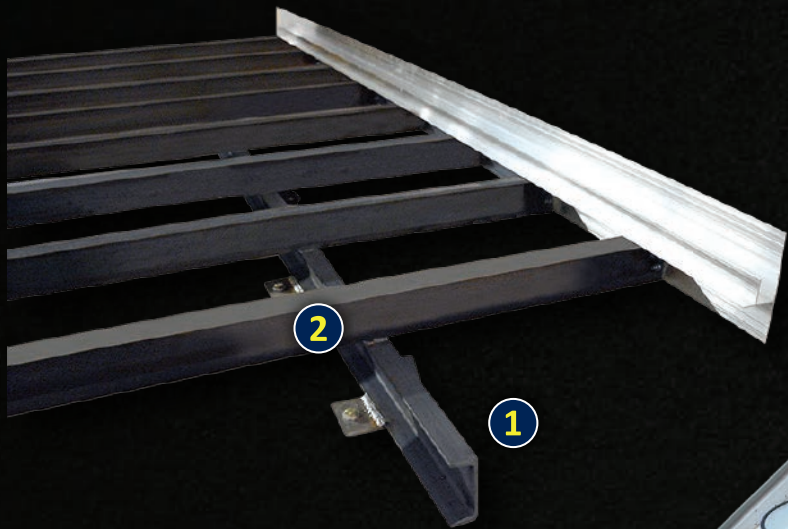
The DuraCube Cargo Van is available as either aluminum sheet and post or FRP. The aluminum design features .040" pre-painted aluminum sheet with galvanized "Z" posts on 16" centers, 2" spacing on seams, and 4" on ribs. Fiberglass Reinforced Plywood (FRP) sidewalls are also available that provide a smooth, clean exterior look that's great for graphics.



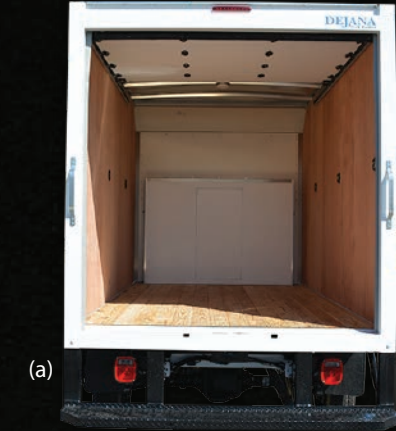
*SRW

What Makes a Dejana DuraCUBE® Outlast the Competition...

Standard Features Engineered for Maximum Strength and Durability



- 1 4" Structural steel longills
- 2 3" I-Beam crossmembers, spaced on 16" centers
- 3 Beefy 4" x 5" Rear posts with 12 ga. galvaneal frame construction suitable for railgates & liftgates



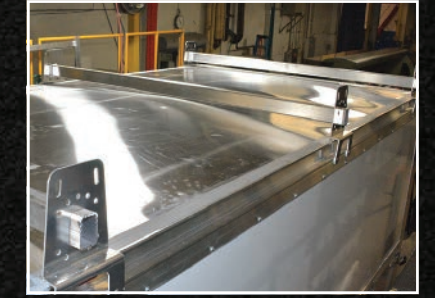
(a) Taillight placement differs from SRW (a) and DRW (b) models.



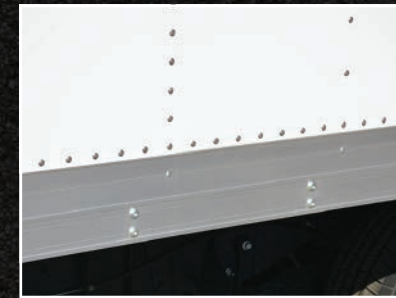
• Recessed running lights



• 10" front radius to protect from branches and debris.
Diamondplate (DRW); Fiberglass (SRW)
• 5" radius aluminum corner castings



• One piece aluminum roof panels, glued with an aviation grade adhesive.
• Optional 3 bow ladder rack



• .040" pre-painted aluminum sheet with galvanized "Z" posts on 16" centers.
• 2 bolts into the extrusion to the I-beam for maximum rigidity.
• 2" rivet spacing on seams and 4" on ribs



• 2x6 tongue & groove pine (standard); Shiplap laminated hardwood floor (Optional)
• Floor flush with end plate
• Integral drain trough



• Extreme duty composite roll-up rear door stainless steel/ alum. Hardware 1" diameter HD roller hinges
• (2) Assist handles



• Anti snag roof bows
• .032 Aluminum roof
• No exposed wiring

Other Standard Features:

DURACUBE FEATURES:

- Complete undercoating of body structure
- Incandescent marker lights
- Interior dome light

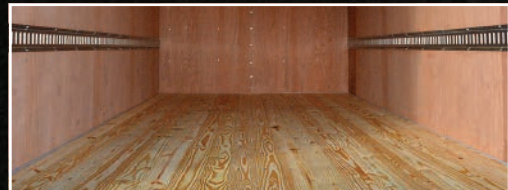
ALUMINUM FEATURES:

- 1/2" Plywood, Front
- 3/8" Plywood, Sides

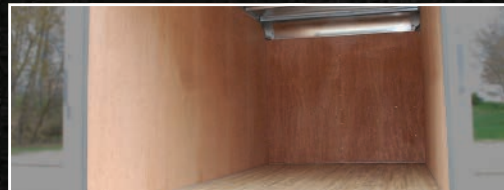
FIBERGLASS REINFORCED PLYWOOD (FRP) FEATURES:

- 1/2" FRP front panel
- .063 Aluminum tread-brite front radius
- 1/2" FRP one piece wall construction

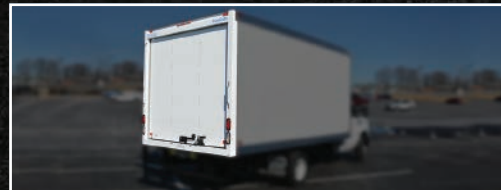
DuraCUBE® Choices:



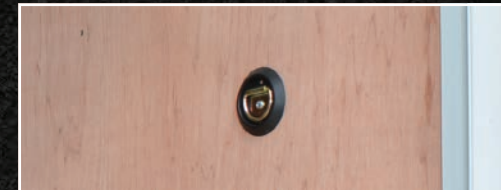
Flat Floor or Wheel Boxes



Plywood Walls or Slats



Roll-up Door or Barndoor



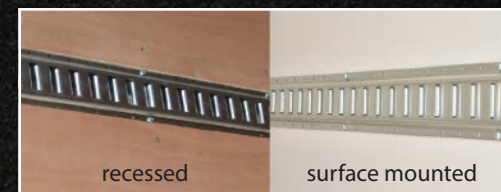
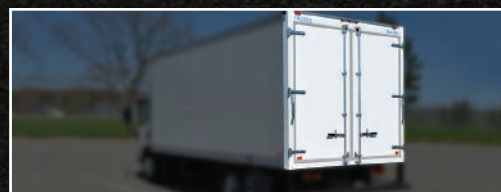
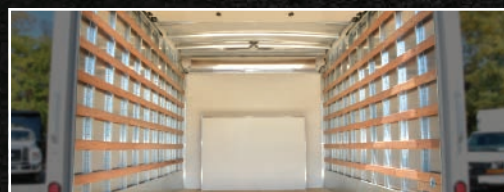
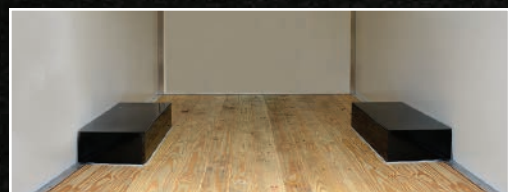
D-Rings or E-Track (recessed or surface mounted)



Full Width Step Bumper or ICC Bumper



Incandescent or LED Lighting



recessed

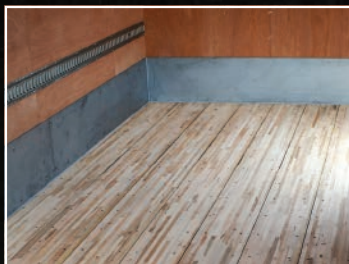
surface mounted



DuraCUBE® Options



Side Door



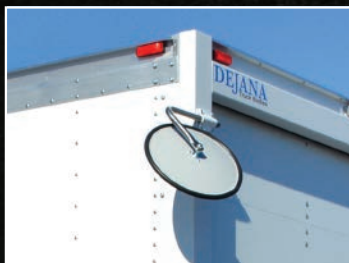
Hardwood Flooring & Scuff Plates



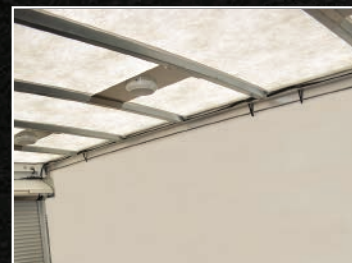
Attic



Aluminum Ladder Bows



Crossover Mirror



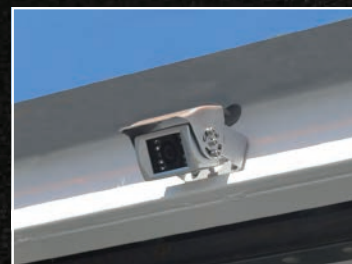
Translucent Roof



Aluminum Sliding Ramp



Aluminum Catwalk



Backup Camera *All vehicles 10,000 lbs. or less require backup cameras.*

Other Options:

- Backup alarm
- Lift gates
- Aimable Spot Light
- Aluminum Ladder Bows
- 12" scuff plate
- Access Ladder
- 23" Threshold Plate
- Up to 12' - 3 Bow minimum
- 14' - 4 Bow minimum

Body Length	*10'	*12'	14'	15'	16'	17'
Exterior Body Length	10' 5"	12' 5"	14' 5"	15' 5"	16' 5"	17' 5"
Interior Usable Length - Barn Door	9' 4"	11' 4"	13' 4"	14' 4"	15' 4"	16' 4"
Interior Usable Length - Roll Up	9' 1½"	11' 1½"	13' 1½"	14' 1½"	15' 1½"	16' 1½"

**SRW only available in 10' and 12' lengths*

Body Height	Height		Width			Rear Door Opening	
	Out	IN	Out	IN (FRP)	IN (Alu.)	Width	Height
SRW DuraCube - 8072	79.25"	72.25"	80"	78.25"	76.25"	72"	67.375"
SRW DuraCube - 8078	85.25"	78.25"	80"	78.25"	76.25"	72"	73.375"
SRW DuraCube - 8084	97.25"	84.25"	80"	78.25"	76.25"	72"	79.375"
DRW DuraCube - 9678	85.25"	78.25"	96"	94.25"	92.25"	88"	73.375"
DRW DuraCube - 9684	91.25"	84.25"	96"	94.25"	92.25"	88"	79.375"
DRW DuraCube - 9690	97.25"	90.25"	96"	94.25"	92.25"	88"	85.375"
DRW DuraCube - 9696	103.25"	96.25"	96"	94.25"	92.25"	88"	91.375"

- 1) Outside height dimensions include the roof crown but do not include the body long sills or chassis sleeper pads.
- 2) Roll up rear door will protrude approximately 1" to 1 1/2" into the top of the door opening when in the up position.

DEJANA®
Truck and Utility Equipment

500 Pulaski Rd
Kings Park, NY 11754
1.877.335.2621
www.DEJANA.com

180911FD-01