



GOOSENECK BODIES



YOUR WORK. YOUR VEHICLE. TRUST



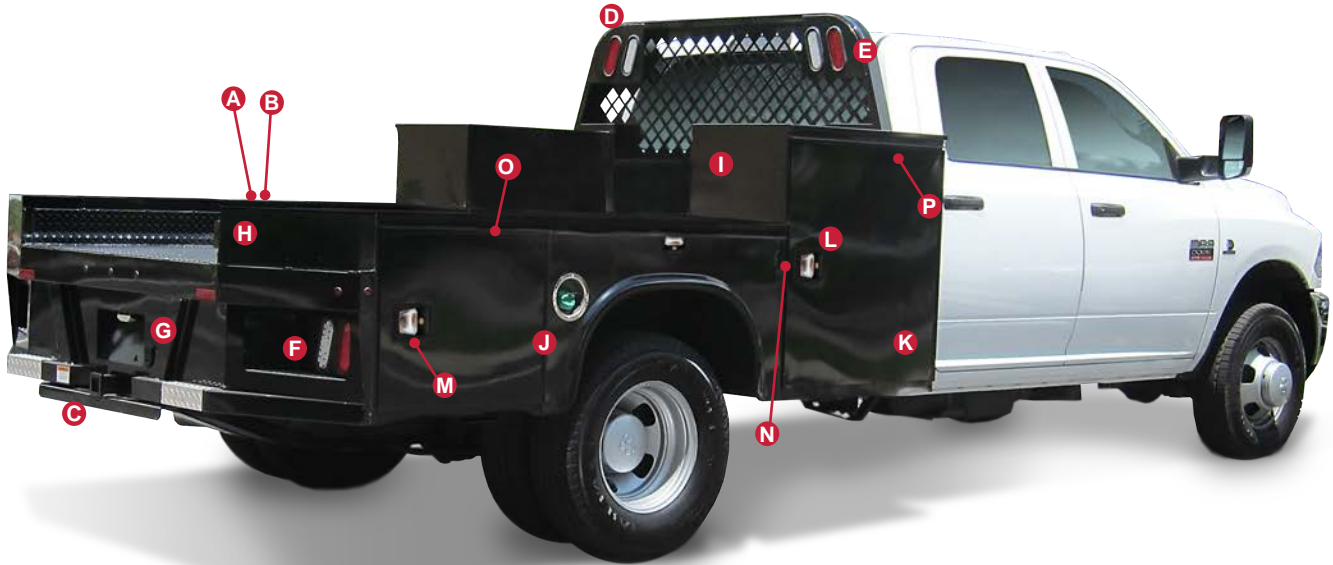
www.knapheide.com



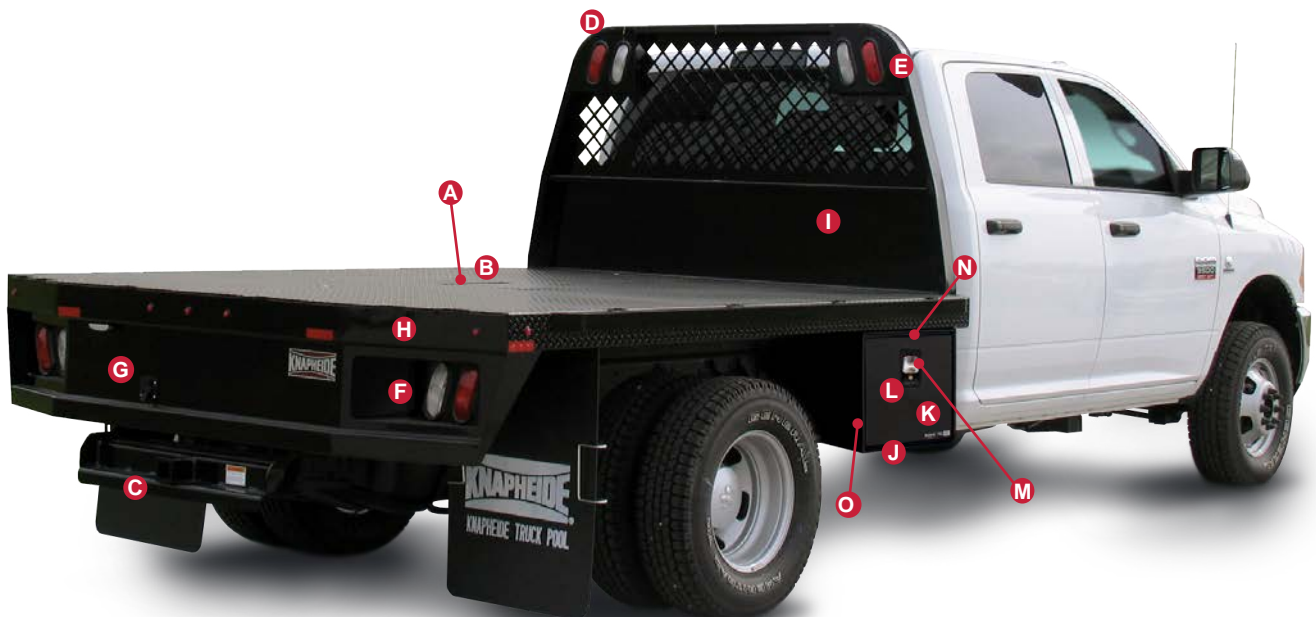
KNAPHEIDE GOOSENECK BODIES

Versatility with storage solutions to meet every need, Knapheide Gooseneck Bodies are an easy choice. Rugged construction, enhanced styling and secure storage give you a body that can haul it all.

Our Gooseneck Bodies offer various levels of storage capabilities so you can choose the body that best fits your job. PGNA and PGNB models offer basic hauling functionality. Enhance the look and storage capacity of your body by choosing the PGNC or PGND model.

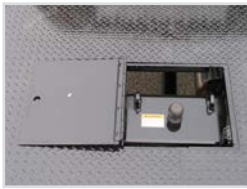


*Body may be shown with optional features

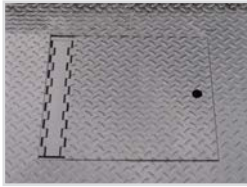


*Body may be shown with optional features

STANDARD FEATURES



- A** Under the floor gooseneck hitch system with 1.31" diameter hole and 2-5/6" ball installed
- Gooseneck hitch rated at 25,000 lbs. gross trailer weight, 5,000 lbs. tongue weight



- B** Hinged access door to cover gooseneck hitch when not in use



- C** Integrated Class V receiver hitch at rear of platform rated at 12,000 lbs. (optional on 8' bodies as most 56" CA chassis include a factory hitch)



- D** Formed, integrated bulkhead with screened window and tapered design to conform to cab contours for improved visibility



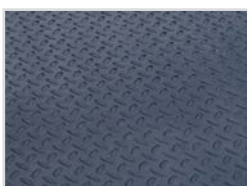
- E** Bulkhead includes integrated light boxes, each with an oval B/U and S/T/T light
**Not standard on PGNA model*



- F** Rear skirt includes integrated light boxes, each with an oval B/U and S/T/T light
**Not standard on PGNA model*



- G** Safety chain attachment points and 7-way trailer plug included in gooseneck box and at receiver hitch



- H** Durable oven-cured coat, finish painted black



- I** Complete immersion in Knapheide's electrodeposition prime paint system ensures primer coverage in hard to reach areas, resulting in superior corrosion resistance.



- J** Our continuous, pry-proof, stainless steel hinge for unmatched security and corrosion resistance, backed by Knapheide's six year warranty



- K** Double-shell, 20 gauge, two-sided A-40 galvanized steel compartment doors with internal reinforcements ensure durability and long life.



- L** Refined, automotive quality, paddle activated, rotary style latches make opening and closing easy. Low maintenance and stylish, the latches are covered under Knapheide's six year warranty.



- M** The latch's interior cover secures the latch to the door and protects the internal latch mechanisms from being damaged.
**Interior feature*



- N** Adjustable security ring strikers provide strength, security and a weather tight seal throughout the entire life of the body.
**Interior feature*



- O** Thick automotive bulb-type neoprene door seals protect compartments from the weather.
**Interior feature*



- P** The double spring over-center door retainer on all vertical doors keeps the door in positive open or closed position. This efficient design works in all temperatures and conditions.
**Interior feature*

**Applies to PGND model only*

Standard features not pictured:

- All marker, clearance and I.D. lights are LED
- Standard, integrated driver side front fuel fill cup

PGND



*Body may be shown with optional features

STANDARD FEATURES

- Rugged 14 gauge two-sided A-40 galvaneal steel body shell
- 250 lb. capacity adjustable divider shelves made of spangled galvanized steel (2 shelves located in each front vertical compartment and one shelf located in each rear compartment)
- Bright aluminum tread plate trim installed on top of each flip top compartment, rear light boxes, rear skirt steps and on the bottom of the fender flair
- Tailboard channels located at the rear of the body and end of the front vertical compartments
- Flip top compartments employ nitrogen gas struts for smooth opening and closing
- Integrated bulkhead and rear skirt lights are standard LED
- Rugged 1/8" thick tread plate floor with 5" structural channel long sills
- 3" formed 10 gauge cross sills

OPTIONS - PGND/PGNDHD

** options already standard on the PGNDHD model*



Additional Aluminum Tread Plate Overlay



C-Tech Drawer Sets



Power Locks



Cargo D-Rings*



Slam Tailgate*

Options not pictured:

- LED compartment lights

SPECIFICATIONS

Model	Length	Width	Weight (lbs.)	Application	Swing Arm Radius	Long Sill Spacing
PGND-838A-F	8'3"	79.1"	1,391	56" CA SRW	61"	38"
PGND-838A-R	8'3"	79.1"	1,391	56" CA SRW	61"	42"
PGND-838A-G	8'3"	79.1"	1,391	56" CA SRW	61"	42"
PGND-968A	9'6"	79.1"	1,568	60" CA SRW	71.5"	34"
PGND-83A-F	8'3"	95.88"	1,582	56" CA DRW	61"	42"
PGND-83A-R	8'3"	95.88"	1,582	56" CA DRW	61"	42"
PGND-83A-G	8'3"	95.88"	1,582	56" CA DRW	61"	42"
PGND-96A	9'6"	95.88"	1,768	60" CA DRW	71.5"	34"
PGND-116A	11'6"	95.88"	2,102	84" CA DRW	71.5"	34"

PGNDHD

The HD package upgrades the PGND with a 3/16" thick tread plate floor, slam tailgate and 6 cargo D-rings.

SPECIFICATIONS

Model	Length	Width	Weight (lbs.)	Application	Swing Arm Radius	Long Sill Spacing
PGNDHD-838A-F	8'3"	79.1"	1,358	56" CA SRW	61"	38"
PGNDHD-838A-R	8'3"	79.1"	1,304	56" CA SRW	61"	42"
PGNDHD-838A-G	8'3"	79.1"	1,347	56" CA SRW	61"	42"
PGNDHD-968A	9'6"	79.1"	1,670	60" CA SRW	71.5"	34"
PGNDHD-83A-F	8'3"	95.88"	1,612	56" CA DRW	61"	38"
PGNDHD-83A-R	8'3"	95.88"	1,565	56" CA DRW	61"	42"
PGNDHD-83A-G	8'3"	95.88"	1,600	56" CA DRW	61"	42"
PGNDHD-96A	9'6"	95.88"	1,865	60" CA DRW	71.5"	34"
PGNDHD-116A	11'6"	95.88"	2,199	84" CA DRW	71.5"	34"





*Body may be shown with optional features

STANDARD FEATURES

- Skirted gooseneck styling with integrated front and rear toolboxes
- Internal stake pockets lining both sides and rear of the platform
- Rub rails installed on both sides of platform for convenient cargo tie downs
- Rugged 12 gauge tread plate floor with 6" structural channel long sills (4" on 8' models)
- 12 gauge formed cross sills, spaced on 16" centers

OPTIONS



Roughneck Contractor Package



4" Removable Side Boards



Above Body Toolboxes

Options not pictured:

- 3/16" tread plate floor
- Gooseneck hitch and trap door removal
- Additional aluminum tread plate overlay
- LED S/T/T lights

SPECIFICATIONS

Model	Length	Width	Weight (lbs.)	Application	Swing Arm Radius	Long Sill Spacing
PGNC-838B-F	8'3"	84"	984	56" CA SRW	61"	38"
PGNC-838B-R	8'3"	84"	947	56" CA SRW	61"	42"
PGNC-838B-G	8'3"	84"	984	56" CA SRW	61"	42"
PGNC-968B	9'6"	84"	1,208	60" CA SRW	71.5"	34"
PGNC-83B-F	8'3"	95.75"	1,110	56" CA DRW	61"	38"
PGNC-83B-R	8'3"	95.75"	1,067	56" CA DRW	61"	42"
PGNC-83B-G	8'3"	95.75"	1,102	56" CA DRW	61"	42"
PGNC-96B	9'6"	95.75"	1,344	60" CA DRW	71.5"	34"
PGNC-116B	11'6"	95.75"	1,577	84" CA DRW	71.5"	34"



*Body may be shown with optional features

STANDARD FEATURES

- Internal stake pockets lining both sides and rear of the platform
- Rub rails installed on both sides of platform for convenient cargo tie downs
- Rugged 12 gauge tread plate floor with 6" structural channel long sills (4" on 8' models)
- 12 gauge formed cross sills, spaced on 16" centers
- Bulkhead includes integrated light boxes, each with an oval B/U and S/T/T light
- Rear skirt includes integrated light boxes, each with an oval B/U and S/T/T light

OPTIONS



Roughneck Contractor Package



4" Removable Side Boards



Toolboxes

Options not pictured:

- 3/16" tread plate floor
- Gooseneck hitch and trap door removal
- LED S/T/T lights

SPECIFICATIONS

Model	Length	Width	Weight (lbs.)	Application	Swing Arm Radius	Long Sill Spacing
PGNB-838A	8'3"	84"	695	56" CA SRW	61"	38"
PGNB-968A	9'6"	84"	880	60" CA SRW	71.5"	34"
PGNB-83A	8'3"	95.75"	790	56" CA DRW	61"	38"
PGNB-96A	9'6"	95.75"	983	60" CA DRW	71.5"	34"
PGNB-116A	11'6"	95.75"	1,112	84" CA DRW	71.5"	34"

PGNA



*Body may be shown with optional features

STANDARD FEATURES

- Internal stake pockets lining both sides and rear of the platform
- Rugged 12 gauge tread plate floor with 6" structural channel long sills (4" on 8' models)
- 12 gauge formed cross sills, spaced on 16" centers

OPTIONS



Roughneck Contractor Package



4" Removable Side Boards



Toolboxes

Options not pictured:

- 3/16" tread plate floor
- Gooseneck hitch and trap door removal
- LED S/T/T lights
- Integrated lightboxes with an oval B/U and S/T/T light, located in bulkhead
- Integrated lightboxes with an oval B/U and S/T/T light, located in rear skirt

SPECIFICATIONS

Model	Length	Width	Weight (lbs.)	Application	Swing Arm Radius	Long Sill Spacing
PGNA-838A	8'3"	79.5"	668	56" CA SRW	61"	38"
PGNA-968A	9'6"	79.5"	580	60" CA SRW	71.5"	34"
PGNA-83A	8'3"	95.75"	765	56" CA DRW	61"	38"
PGNA-96A	9'6"	95.75"	958	60" CA DRW	71.5"	34"
PGNA-116A	11'6"	95.75"	1,083	84" CA DRW	71.5"	34"



Since 1848, The Knapheide Manufacturing Company has continued to be an industry leader, with a vast distribution network and expert staff ready to help.



COMMITMENT TO CORROSION RESISTANCE

Corrosion shouldn't be a concern when you buy quality Knapheide products. To give you the best protection from corrosion, we installed our state-of-the-art, custom-designed electrodeposition prime paint system. Our E-coat system bonds prime paint to steel by an electroplating process, to give you a superior coat of primer resulting in better corrosion protection compared to spraying methods. Complete immersion in our E-coat results in a prime coat that provides the best chemical and solvent resistance. Because of our commitment to corrosion resistance, you should never worry about the quality of your Knapheide products.



- No Rust Through
- Free from Defects in Workmanship
- Free from Defects in Materials



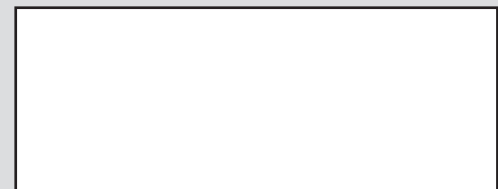
SINCE 1848

The Knapheide Manufacturing Company
1848 Westphalia Strasse | Quincy, Illinois 62305

(217) 222-7131

- www.knapheide.com
- knapheide@knapheide.com

For more information:



Specifications subject to change without notice. Some models shown with optional equipment.