

KNAPHEIDE
SINCE 1848

// GM

KUV BODIES



KNAPHEIDE KUV BODIES

Working out of a Knapheide KUV keeps you organized and productive. Large perimeter bins are easy to access and keep your parts and tools separated into easy-to-manage spaces.

The Knapheide KUV is available in multiple heights and lengths for different applications. It is designed to increase productivity and efficiency through better organization of parts and equipment for specialty contractors, including plumbers, HVACR technicians, electricians, and more.

No more looking for what you need—just grab and go!



KUV129DH
*Body may be shown
with optional features

Visit knapheide.com/quote and fill out the form to receive a quote and additional product information.

STANDARD FEATURES

- A** Double panel rear cargo doors lock and seal into the body frame. These 20-gauge galvaneal steel doors have nitrogen gas struts, slam latches, and 9"x30" glass windows with guards.
- B** Two conduit chutes to transport copper pipes, PVC, and conduit
- C** Master Locking System for piece of mind — locks down all of the side compartments in one move
- D** Rear vertical compartment contains (1) 250-lb. capacity adjustable divider shelf
- E** Vertical compartment doors employ double-spring over-center retainers for elimination of involuntary swing
- F** Horizontal compartment contains (1) adjustable divider shelf to hold up to 250 lb. (passenger side only)
- G** Neoprene door seals protect compartments from the weather
- H** Front vertical compartments contain (2) 250-lb. capacity adjustable divider shelves
- I** Continuous stainless steel hinges are pry-proof and corrosion-resistant
- J** Automotive-quality, rotary-style latches make opening and closing easy
- K** Spacious cargo storage area with corrugated steel floor for transporting drywall, larger tools, water heaters, and oversized items
- L** Refined ABS partition is equipped with a sliding cab access door and window. The door's slam latch can be locked from the cab and secured in either an open or closed position.
- M** Two interior dome lights in cargo area with light switch inside the cargo doors
- N** Electrodeposition prime-paint system provides superior corrosion resistance
- O** Flat panel space provides rolling billboard to promote business

Other features not shown:

- All compartments can be locked independently for maximum security
- Aluminum fuel fill
- Grab handle (rear right)



// CARGO AREA AND CONDUIT CHUTE CAPACITY

- 10' in 129" bodies
- 12' in 153" bodies



// AERODYNAMIC WIND DEFLECTOR

- Mounted on body above cab
- Included on all models except KUV129SU and KUV129SL

AVAILABLE MODELS

CHASSIS MODEL	WHEELBASE	CHASSIS WEIGHT ¹	BODY MODEL	BULK CARGO AREA	TOTAL STORAGE	COMPARTMENT AREA	BODY WEIGHT	GVWR	PAYLOAD ²
G33503	139"	4,528 lb.	KUV129SU	265 cu. ft.	335 cu. ft.	70 cu. ft.	1,728 lb.	9,900 lb.	3,644 lb.
G33503	139"	4,528 lb.	KUV129SL	318 cu. ft.	388 cu. ft.	70 cu. ft.	1,906 lb.	9,900 lb.	3,466 lb.
G33503	139"	4,528 lb.	KUV129SH	403 cu. ft.	473 cu. ft.	70 cu. ft.	2,083 lb.	9,900 lb.	3,289 lb.
G33503	139"	4,780 lb.	KUV129DL	355 cu. ft.	425 cu. ft.	70 cu. ft.	1,969 lb.	12,300 lb.	5,551 lb.
G33503	139"	4,780 lb.	KUV129D20L	329 cu. ft.	425 cu. ft.	96 cu. ft.	2,042 lb.	12,300 lb.	5,478 lb.
G33503	139"	4,780 lb.	KUV129DH	422 cu. ft.	492 cu. ft.	70 cu. ft.	2,177 lb.	12,300 lb.	5,343 lb.
G33803	159"	5,085/5,150 lb.	KUV153DL	421 cu. ft.	506 cu. ft.	85 cu. ft.	2,333 lb.	12,300/14,200 lb.	4,882/6,717 lb.
G33803	159"	5,085/5,150 lb.	KUV153D20L	389 cu. ft.	506 cu. ft.	117 cu. ft.	2,368 lb.	12,300/14,200 lb.	4,847/6,682 lb.
G33803	159"	5,085/5,150 lb.	KUV153DH	500 cu. ft.	585 cu. ft.	85 cu. ft.	2,481 lb.	12,300/14,200 lb.	4,734/6,569 lb.
G33803	159"	5,085/5,150 lb.	KUV153D20H	468 cu. ft.	585 cu. ft.	117 cu. ft.	2,515 lb.	12,300/14,200 lb.	4,700/6,535 lb.

¹ Chassis weight calculated with 6.0L gas engine. Optional engines and other chassis may affect chassis weight.

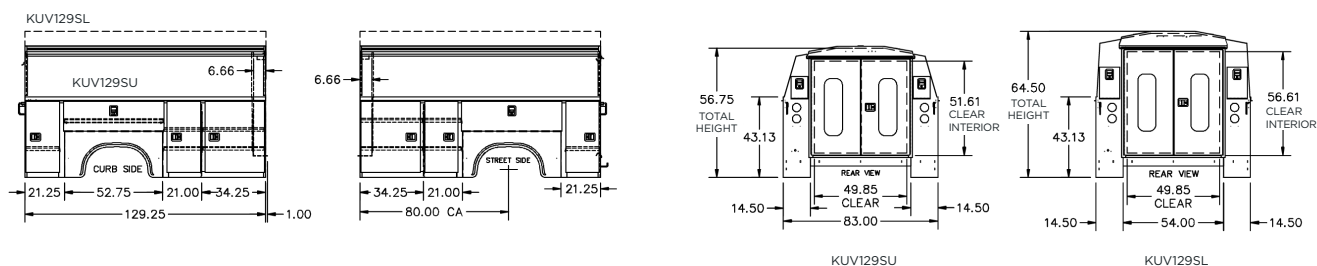
² Final payload calculation subject to chassis and body options.

***"S" model denotes single rear wheel with 14.5" deep compartments.

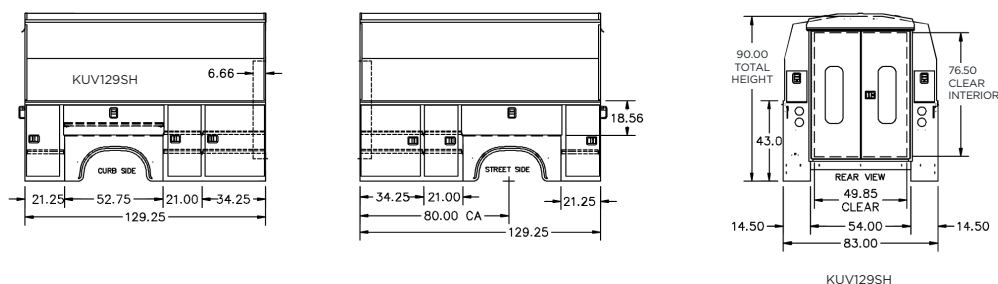
***"D" model denotes dual rear wheel with 14.5" deep compartments.

***"D20" model denotes dual rear wheel with 20" deep compartments.

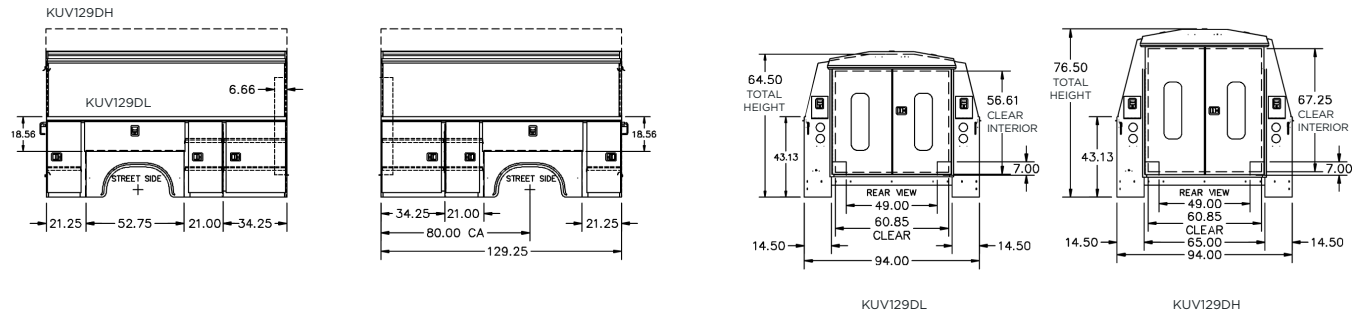
// KUV129SU / KUV129SL



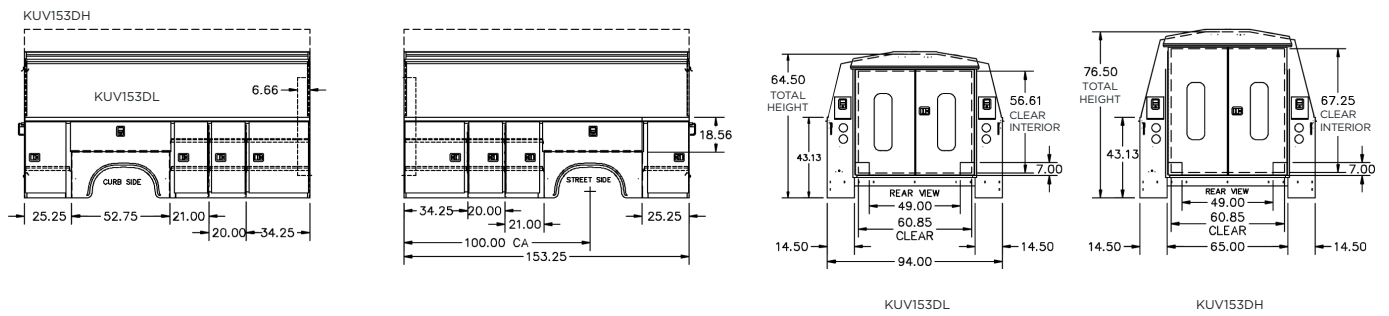
// KUV129SH



// KUV129DL / KUV129DH



// KUV153DL / KUV153DH



POPULAR OPTIONS



**POWER
LOCKS**



**CODEABLE
PADLOCK**



**UPPER SIDE
GLASS**



**REAR VISION
CAMERA**



**ALUMINUM
DRAWERS**



SORTIMO



**SOLID REAR
DOORS**



**KNAPLINER
REAR BUMPER**



**PULL OUT
TRAY**



**POWER
LIFTGATE**
*Not available on
SRW models*



**CLASS V
RECEIVER
HITCH**



**MECHANICS
VISE
BRACKET**



SPITZLIFT



**LED
COMPARTMENT
LIGHTING**



**3 BOW
LADDER
RACK**



**POWER
LADDER
RACK**



**SIDE ACCESS
DOOR**



**SIDE MOUNT
LADDER
RACK**



COMMITMENT TO CORROSION RESISTANCE

Corrosion won't be a concern when you buy quality Knapheide products. To give you the best corrosion protection, we utilize a state-of-the-art, custom-designed, 12-step, SST cathodic electrodeposition finishing system, called "E-Coat."

It bonds prime paint to steel by an electroplating process to give you a superior coat of primer, resulting in better corrosion protection compared to spraying methods.

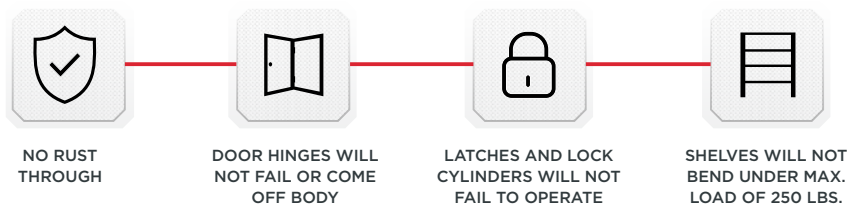
This system allows us to create products with the highest level of corrosion resistance available.

NEVER SETTLE

If you are going to be a leader, it takes more than building a high-quality product. It means never being totally satisfied with that product, no matter how high quality it may be. It requires constant vigilance and a willingness to take a chance on something new. And it means exceeding expectations every time. As the industry changes, one thing never will—our commitment to making customers like you as productive and efficient as possible. We know you don't settle, and we don't either. That's why we want you never to settle for anything less than Knapheide on the back of your truck.

Knapheide. Never settle.

SIX-YEAR, LIMITED WARRANTY



Visit www.knapheide.com/warranty for more information.



The Knapheide Manufacturing Company
1848 Westphalia Strasse | Quincy, IL 62305

217-222-7131
www.knapheide.com
knapheide@knapheide.com

KNAPHEIDE
SINCE 1848