



# SNOW REMOVAL

EQUIPMENT







# BUILT FOR SERIOUS SNOW PLOWERS

Let winter shell out its worst, because that only brings out your best. And, when you're out there fighting the storms all day or all night, Western Products is right there with you, providing the equipment you need to get it done right and get you on to the next job.

Forged by hard-working men and women in our award-winning Milwaukee, Wisconsin manufacturing facility, WESTERN® snow and ice control equipment is built to stand up to winter's worst.

More Jobs. Done Faster. It's the WESTERN way.



# WIDE-OUT™

## THE ULTIMATE SNOW-MOVING MACHINE.

Get an 8' straight blade, a 10' straight blade, an 8' 10" scoop/pusher blade, or an unsurpassed windrowing machine — all at the touch of a button. The WESTERN® WIDE-OUT adjustable-wing snowplow hydraulically transforms to move more snow, no matter what the condition. Up to 30% more. It's the ultimate in CONTRACTOR GRADE® performance.



**ANGLES IN SCOOP**  
The WIDE-OUT blade fully angles in scoop position to carry snow around corners with minimal spill-off.

**WING CUTTING EDGES**  
Durable polyurethane wing cutting edges reduce wear and protect the blade. These cutting edges can effectively "trip" in any position, including scoop.



### HYDRAULIC WING EXTENSIONS

Independently position each wing to maximize blade width and move more snow. Wings slide laterally across a structurally reinforced slide box.

### DUAL POWER BAR

Six vertical ribs and dual horizontal POWER BAR design provide exceptional strength and prevent blade twisting, even in the most demanding snow conditions.

### TRIP SPRINGS

Four trip return springs help protect your plow and truck by allowing the blade to trip forward when striking an obstacle.

## WESTERN® WIDE-OUT™ is four plows in one

- 8' Retracted Straight
- 10' Expanded Straight
- Windrow Position
- 8' 10" Scoop Mode



### UltraMount®

The fast and easy mounting system.



### FLEET FLEX

Electrical system provides true fleet interchangeability.



### SECURITY GUARD™

Anti-theft system renders plow inoperable to unauthorized users.



### OPTIONAL ACCESSORIES

- Snow deflector
- Shoe kit
- Back drag edge

Compare the efficiency of the WIDE-OUT to your plow at [westernplows.com/calculator](http://westernplows.com/calculator)



Get the free mobile app at <http://gettag.mobi>





# PRODIGY™

## WINGS ANGLE AUTOMATICALLY TO MAXIMIZE PLOWING EFFICIENCY.

The all-new PRODIGY snowplow features an ingenious patented mechanical wing design that automatically positions its wings to deliver maximum plowing efficiency. Whether in straight-ahead scoop mode or angled for windrowing, it delivers multi-position winged plow productivity in a unit that's as easy to operate as a straight blade.



**PRODIGY™**



### SKID-STEER MOUNT AVAILABLE

Hooks up fast and easy. Skid-steer hydraulics power the blade.

### FULLY MECHANICAL WINGS

Automatically change position as you maneuver the blade, to maximize plowing efficiency.

### REINFORCED BLADE STRUCTURE

Eight vertical ribs and horizontal POWER BAR provide added reinforcement and strength.

### TRIP BLADE AND WING PROTECTION

Four heavy-duty coil springs help absorb shock when striking objects. Coil compression springs automatically return wings to their scoop position.

### MECHANICALLY PIN WINGS

For 9' 8" straight blade operation or back dragging.



### STRAIGHT-AHEAD SCOOP MODE

When positioned for straight-ahead plowing, both PRODIGY wings angle forward, defaulting to an 8' 7" wide scoop position for maximum snow pushing and stacking ability.



### ANGLED FOR WINDROWING

As the blade angles, a heavy-duty coil compression spring and cable assembly pulls the trailing wing back in line with the moldboard, while the leading wing remains angled forward to direct snow into the moldboard. Fully angled, you'll windrow a full 7' 10" swath with virtually no spill-off.

### UltraMount® 2

The fast and easy mounting system.



### FLEET FLEX

Electrical system provides true fleet interchangeability.



### SECURITY GUARD™

Anti-theft system renders plow inoperable to unauthorized users.



### OPTIONAL ACCESSORIES

- Blade shoes
- Shock absorber
- Rubber deflector
- Back drag edge

Check out the PRODIGY plow features and see it perform in action at [westernplows.com/prodigy](http://westernplows.com/prodigy)



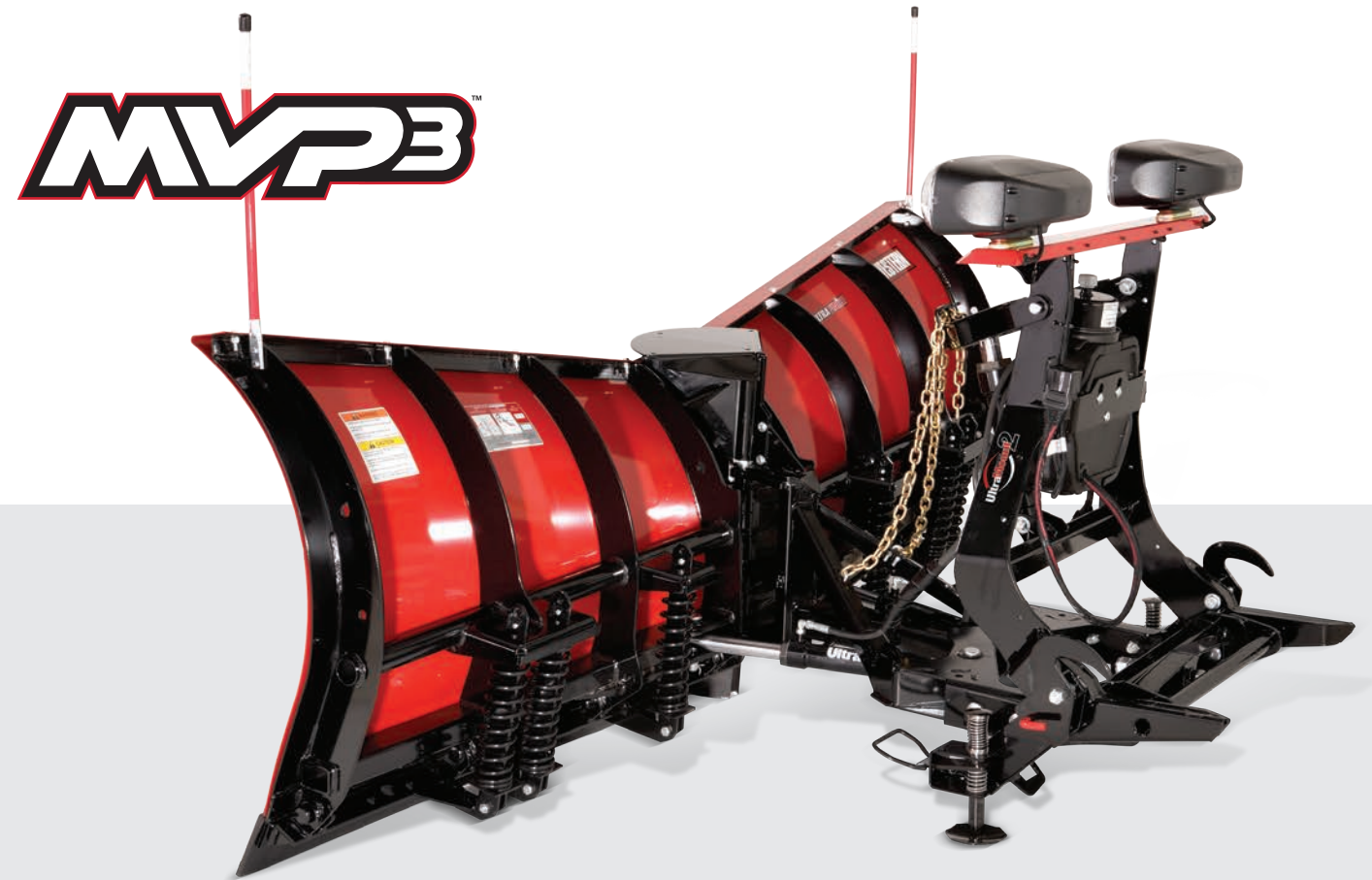
Get the free mobile app at  
<http://gettag.mobi>



# MVP 3™

## INTRODUCING A NEW GENERATION IN V-PLOW PERFORMANCE.

The WESTERN® MVP 3 snowplow provides a whole new slant on V-plow performance and durability. Ultra-fast hydraulics deliver maximum plowing efficiency. And the trip-edge design provides protection in all blade configurations, getting you over obstacles without losing your load. Standard UltraLock double-acting cylinders hold the wings firmly in place for clean back dragging. MVP 3 is available in steel or poly in 7½', 8½' and 9½' widths.



### FLARED WINGS

Wings soar from 31" center height up to 39" at outer edge on 9' 6" models.

### REINFORCED BLADE STRUCTURE

Eight vertical ribs and horizontal POWER BAR across the entire back of the blade provides structural rigidity.

### DUAL TRIP EDGE

Independent trip edge protection in all blade configurations keeps snow in front of the blade.

### UltraLock DOUBLE-ACTING CYLINDERS

This standard feature allows clean back dragging. Plus the wings lock together for efficient straight blade operation.

### MASSIVE CENTER PIN AND HINGE

1¼" heat-treated steel pin and hinge with three connection points provide added strength.

### STEEL TOP CENTER GAP COVER

Steel cover over center hinge and formed cutting edges reduce snow leakage in all blade positions.

### BIGGER LIFT RAM

1¾" diameter cylinder for more lifting power.

### T-FRAME DESIGN

T-frame provides added strength and allows blade pitch adjustment to reduce uneven cutting edge wear.

### UltraMount® 2

The fast and easy mounting system.



### FLEET FLEX

Electrical system provides true fleet interchangeability.



### SECURITY GUARD™

Anti-theft system renders plow inoperable to unauthorized users.



### OPTIONAL ACCESSORIES

- Snow deflectors
- Blade wings
- Back drag edge
- Shoe kit
- Curb guards
- Blade angle stops

Learn more about the MVP 3 V-plow and watch it work at [westernplows.com/mvp3](http://westernplows.com/mvp3)



Get the free mobile app at  
<http://gettag.mobi>



# MVP PLUS™

## SETTING THE STANDARD IN V-PLOW PERFORMANCE.

The WESTERN® MVP PLUS V-plow was designed with efficiency, durability and performance in mind. With an ultra-fast hydraulic system and easy-to-use controls, you can quickly position the MVP PLUS wings simultaneously or separately into V-plow, straight blade or scoop mode at the touch of a button. Available in steel or poly in 7½', 8½' and 9½' widths.



### DUAL TRIP EDGE DESIGN

Each wing features a trip edge that can trip back in ANY configuration – including vee and scoop – to protect your plow and truck when the blade strikes an obstacle.

### UltraLock DOUBLE-ACTING CYLINDERS

This standard feature allows clean back dragging. Plus the wings lock together for efficient straight blade operation.

### T-FRAME DESIGN

T-frame provides added strength and allows blade pitch adjustment to reduce uneven cutting edge wear.

### POWER BAR CONSTRUCTION

The exclusive POWER BAR, along with eight vertical ribs, provides exceptional torsional strength across the entire blade.

### STEEL CENTER GAP COVER

Located over the center hinge, it helps prevent snow from being lost over the top.

### ULTRA-FAST HYDRAULICS

Custom-built in house at the Western Products Milwaukee manufacturing facility, the MVP PLUS hydraulic system delivers fast, reliable operation.

### UltraMount®

The fast and easy mounting system.



### FLEET FLEX

Electrical system provides true fleet interchangeability.



### SECURITY GUARD™

Anti-theft system renders plow inoperable to unauthorized users.



### OPTIONAL ACCESSORIES

- Snow deflector
- Shoe kit
- Back drag edge
- Blade angle stops

Get all the information about MVP PLUS V-plows at [westernplows.com/mvpplus](http://westernplows.com/mvpplus)



Get the free mobile app at  
<http://gettag.mobi>



# PRO PLUS®

## FOR HEAVY-DUTY CONTRACTOR GRADE® PERFORMANCE.

Built for heavy-duty commercial and light municipal plowing, it's no wonder the WESTERN® PRO PLUS has been a best seller among contractors since its introduction. This straight blade plow is available in 8', 8½' and 9' widths, and is designed to fit a wide range of vehicles, from ¾-ton to F-550-sized trucks and skid-steers.

# PRO PLUS®



### SKID-STEER MOUNT AVAILABLE

Hooks up fast and easy. Skid-steer hydraulics power the blade.

### REINFORCED PLOW BLADE

Eight vertical ribs and horizontal POWER BAR provide added reinforcement and strength.

### A-FRAME CONSTRUCTION

The 3" square tubing provides strength and durability.

### PIVOT POINT

Features 1" diameter pivot bolt to ease stress on the nose plate.

### HEAVY-DUTY CUTTING EDGE

1/2" thick x 6" high carbon steel cutting edge is standard.

### TRIP BLADE PROTECTION WITH SHOCK ABSORBERS

Trip blade features four heavy-duty coil springs and two shock absorbers to soften blade return.

### HIGH-STRENGTH RECTANGULAR TUBE QUADRANT

Built to withstand season after season of commercial use.

### HIGH-STRENGTH STEEL BASE CHANNEL

Provides extra support where it's needed most.

### UltraMount®

The fast and easy mounting system.



### FLEET FLEX

Electrical system provides true fleet interchangeability.



### SECURITY GUARD™

Anti-theft system renders plow inoperable to unauthorized users.



### OPTIONAL ACCESSORIES

- Blade wings
- Back drag edge

Find out which PRO PLUS snow plow is right for your truck at [westernplows.com/quickmatch](http://westernplows.com/quickmatch)



Get the free mobile app at <http://gettag.mobi>





# PRO-PLOW® SERIES 2

## LEAVE IT TO THE PROS.

Designed for the professional plower, the WESTERN® PRO-PLOW has been one of the best-selling straight blade models for contractors since its introduction.



## AVAILABLE IN POLY

The slick surface of the POLY PRO-PLOW® Series 2 is made from thermal-formed, high-density polyethylene to provide superior snow-rolling action for plowing efficiency. The poly surface is rust-proof and maintenance-free.

The 7½' and 8' blades are available in both powder-coated steel and poly. The 8½' blade is available in steel only.

## TRIP BLADE PROTECTION WITH SHOCK ABSORBERS

Trip blade features four heavy-duty coil springs and a shock absorber to soften blade return.

## BLADE SHOES ARE STANDARD

They extend cutting edge and base angle life when plowing rough surfaces.

## RUBBER SNOW DEFLECTOR

Helps keep snow off your windshield. It's standard with poly blade models, optional with steel blades.

**UltraMount®**  
The fast and easy mounting system.



**FLEET FLEX**  
Electrical system provides true fleet interchangeability.



**SECURITY GUARD™**  
Anti-theft system renders plow inoperable to unauthorized users.



**OPTIONAL ACCESSORIES**

- Snow deflector
- Shoe kit
- Back drag edge

# HEAVYWEIGHT

## BIG JOBS DEMAND BIG EQUIPMENT!

With the largest blade available from WESTERN®, the HEAVYWEIGHT snowplow is made for trucks in the 14,000–27,000 GVW range. You can count on this plow for light municipal plowing applications like local streets, parks, county roads, parking lots and more. It's available in a 10' width.



## HEAVY-DUTY CUTTING EDGE

1/2" thick x 6" tall AASHO punched carbon steel cutting edge is standard.

## STANDARD ADJUSTABLE CAST-IRON DISC SHOES AND CONVENIENT WHEELS

A standard set of wheels helps maneuver the blade when attaching it to your truck or removing from the vehicle.

## TRIP BLADE PROTECTION WITH SHOCK ABSORBERS

Two shock absorbers and six trip return springs help protect the plow and truck when striking an obstacle.

## UniMount® MOUNTING SYSTEM

The mechanical attachment system quickly attaches and detaches.



# MIDWEIGHT™

## BIG PERFORMANCE FOR LIGHT COMMERCIAL USE.

Known for being a lean pusher with a lot of muscle, the 7½' WESTERN® MIDWEIGHT plow provides high performance for your light commercial jobs. Blades are available in steel or poly.



MIDWEIGHT POLY PLOW SHOWN

### HIGH-STRENGTH STEEL BASE CHANNEL

Provides extra support at the base of the blade.

### REINFORCED PLOW BLADE

Six vertical ribs and horizontal POWER BAR provide reinforcement and strength.

# HTS™

## PUT YOUR HALF-TON TRUCK TO WORK.

There's no need for compromise with the WESTERN® HTS snowplow. This full-size, full-featured plow is the perfect fit for lighter half-ton, four-wheel-drive trucks. Its 7½' wide straight blade handles personal and light commercial use with rugged, pro-like performance without the extra weight.



### REINFORCED PLOW BLADE

Six vertical ribs and horizontal POWER BAR provide structural reinforcement.

### TRIP BLADE PROTECTION

The two-spring trip blade protects your plow and truck when the plow strikes and obstacle.

### HYDRAULIC SCRAPE LOCK

Hydraulically locks the blade down for enhanced scraping and clean back dragging performance.

### ONE-SIDE HOOKUP

The simplified UltraMount® system is fast and easy.

**UltraMount®**  
The fast and easy mounting system.



**FLEET FLEX**  
Electrical system provides true fleet interchangeability.



**SECURITY GUARD™**  
Anti-theft system renders plow inoperable to unauthorized users.



**OPTIONAL ACCESSORIES**

- Snow deflector
- Shoe kit
- Back drag edge

**UltraMount®**  
The fast and easy mounting system.



**FLEET FLEX**  
Electrical system provides true fleet interchangeability.



**SECURITY GUARD™**  
Anti-theft system renders plow inoperable to unauthorized users.



**OPTIONAL ACCESSORIES**

- Snow deflector
- Shoe kit
- Back drag edge



# UltraMount® and UltraMount® 2 & CHAIN LIFT SYSTEM

THE FAST, EASY ATTACHING SYSTEM.

The UltraMount system is designed for fast and easy attach and detach. UltraMount 2 features a more robust one-piece design and is 100% compatible with existing mounts and electrical platforms.

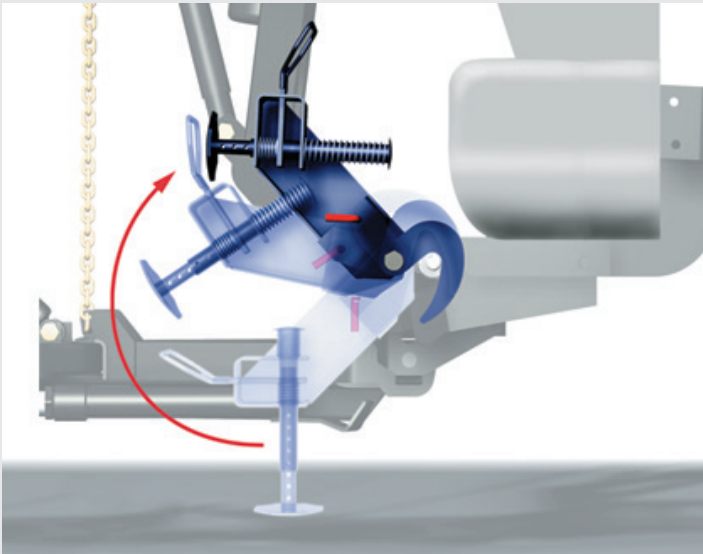


### SIMPLE MECHANICAL SYSTEM

No hydraulic or electrical components to fail, and no tools required.

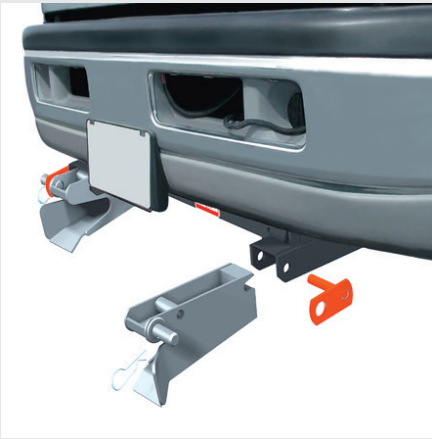
### QUICK AND EASY ATTACHMENT

Drive into the extra-wide flared receiver brackets. Pull the shoe handle up, pull the lock pin and rotate the handles up. Repeat on the other side and plug in the electrical connections. That's it!



### EXCLUSIVE ROTATING PIVOT BAR

The patented PIVOT BAR keeps the attaching points level even when the blade is not, for accurate drive-in alignment. It also allows the blade to pivot while plowing on uneven terrain for a cleaner scrape and more even cutting edge wear.



### REMOVEABLE RECEIVER BRACKETS

Quickly maximize vehicle ground clearance in the off-season. No tools required.



### CHAIN LIFT SYSTEM

The WESTERN® UltraMount® system features a simple mechanical chain lift. This provides instantaneous float so the blade can freely follow the contours of uneven ground for a cleaner scrape.

The chain lift allows WESTERN plows to stack higher than plows with

cylinder lift systems, which are limited by the range of the hydraulic ram stroke.

And in the rare event of a hydraulic failure, you can push the plow into a snow bank, and easily “short chain” the plow for emergency transport.



# FLEET FLEX Electrical System

ONE TRUCK. ONE CONTROL. ANY PLOW.

The FLEET FLEX electrical system provides true fleet interchangeability among current UltraMount® and UltraMount® 2 mounted snowplows.

The same hand-held control or joystick can operate all WESTERN® commercial grade snowplows.

Features include:

- PROGRAMMABLE “SOFT-STOP”
- PROGRAMMABLE “ONE-TOUCH” FLOAT
- BUILT-IN SECURITY GUARD™ ANTI-THEFT SYSTEM



## SECURITY GUARD ANTI-THEFT SYSTEM

The exclusive WESTERN SECURITY GUARD snowplow anti-theft system is a safe and secure way to electronically “lock” your snowplow when it is detached from your truck.

It electronically synchronizes your snowplow control and plow module. When activated, it disables the electrical control system and renders the plow inoperable to unauthorized users.



## UNIVERSAL CONTROL OPTIONS

Choose between the CabCommand hand-held control or joystick control for efficient, precise and intuitive blade control while plowing.

## CABCOMMAND CONTROL

- Power “on” and “float” LED
- Backlit for night operation
- Coil cord for easy mobility



## ISOLATION MODULE

This advanced snowplow light and electrical system features improved electrical pins in the harness plugs for trouble-free connections. An under-hood module improves system life and complies with OEM requirements. No toggle switch is needed to change from vehicle to plow lights.



## JOYSTICK CONTROL

- Power “on” and “float” LED
- Backlit for night operation
- Compact to fit anywhere
- Plug-in connector for easy removal



# NIGHTHAWK™



LOW-BEAM HALOGEN HEADLAMP ILLUMINATION.



## STATE-OF-THE-ART REFLECTOR OPTICS

Provide a smooth, wide beam pattern with minimal glare.

## WATERTIGHT ADHESIVE BOND

Seals out water between the lens, reflector and housing to prevent freezing damage.

## ROBUST TWO-STUD MOUNTING

Keeps headlamps firmly in place, even under the harshest shock and vibration forces.

## H13 LONG-LIFE HALOGEN BULB

Has an average life of 1,500 hours, and is easy to replace through a simple three-screw bulb access cover.

# ULTRAFINISH™ POWDER COAT WITH EPOXY PRIMER

THE INDUSTRY’S BEST PROTECTION AGAINST WEAR AND RUST.

The ULTRAFINISH powder coat process is standard on all WESTERN® plows. The automated pre-treatment process and multi-stage pre-wash prepare the plow surface for optimum primer adhesion. Our durable epoxy primer improves corrosion resistance and enhances the ULTRAFINISH powder coat adhesion. Robotic guns provide precise, consistent powder coat coverage. And the final baking process provides that long-lasting, hard-as-nails WESTERN red that’s become synonymous with quality.





# Protect Your Investment With Original WESTERN® Parts & Accessories



Ensure your WESTERN plow and ice removal equipment remains efficient and reliable season after season with Factory Original parts and accessories from your local WESTERN dealer. Using “will-fit” alternatives can alter your plow’s performance and may affect your product warranty. Stick with WESTERN for the parts and accessories you need. It’s the smart choice for protecting your investment.



### PLOW WINGS

Add up to 30% more carrying capacity to your blade with these optional wings. Easy attach/detach with no tools required. Available for all PRO PLUS®, MVP PLUS™ and MVP 3™ 8½' and 9½' plows.



### POLY SNOW DEFLECTOR

This heavy-duty deflector is constructed of high-density polyethylene material and vacuum formed with integral ribs for structural integrity. The curved Roll-Action™ design improves snow containment. Clamping bars and curl braces are included. Available in 7½' and 9' widths to fit 7½', 8', 8½' and 9' steel blades on most models.



### RUBBER DEFLECTOR

The 2-ply rubber snow deflector is available in 7½' to 10' lengths to fit blades ranging in size from 6½' to 10'.



### HIGH-PERFORMANCE HYDRAULIC FLUID

WESTERN high performance fluid is formulated to provide better viscosity in all temperatures for optimal performance in severe weather conditions. Available in quart and gallon sizes.



### BACK DRAG EDGE

Quickly clear snow away from garage or overhead doors and other tight areas. Easy bolt-on installation for both steel and poly blades. Fits most models.



### SHOE KIT

Bolt-on shoe kit extends cutting edge and base angle life when plowing rocky or abrasive surfaces. Kits vary by plow model.



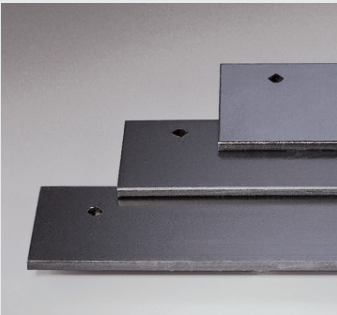
### CURB GUARDS

The bolt-on curb guards have a unique, compact, cast-iron design with increased wear material to protect your plow’s outer edge. Side-to-side interchangeability allows you to move the guard to the side being used most for extended guard life. Fits most models.



### SNOW PLOW EMERGENCY PARTS KIT

This handy kit provides an assortment of Factory Original parts needed for emergency plow repairs. All packed in a nylon duffel bag, with WESTERN® knit cap included. (Kit content varies by model.)



### STEEL CUTTING EDGES

These 1/2" thick cutting edges fit the same hole pattern as the cutting edge that comes standard on your Factory Original blade. Fits most models.



### PAINT

Available in spray or quart cans, in red or black top coat or the primer-based under coat, these Factory Original paints provide durable coverage and are formulated to match your original equipment.



STRAIGHT BLADES											
Plow Type	Blade Width	Blade Height	Blade Gauge	Trip Springs	Shock Absorbers	Vertical Ribs	Angling Rams	Plowing Width (full angle)	Approx. Weight (less mount)	Disc Shoes	Cutting Edge
HTS™	7½'	27"	14	2	-	6	1½" x 8"	6'7"	412 lb	optional	⅝" x 6"
MIDWEIGHT™	7½'	27"	14	2	-	6	1½" x 10"	6'6"	540 lb	optional	⅝" x 6"
MIDWEIGHT POLY	7½'	27"	¼" poly	2	-	6	1½" x 10"	6'6"	532 lb	optional	⅝" x 6"
PRO PLOW® Series 2	7½'	29"	11	4	1	7	1½" x 10"	6'6"	653 lb	cast iron	⅝" x 6"
PRO PLOW Series 2	8'	29"	11	4	1	7	1½" x 10"	6'11"	668 lb	cast iron	⅝" x 6"
PRO PLOW Series 2	8½'	29"	11	4	1	7	1½" x 10"	7'4"	686 lb	cast iron	⅝" x 6"
POLY PRO PLOW Series 2	7½'	29"	⅜" poly	4	1	7	1½" x 10"	6'6"	677 lb	cast iron	⅝" x 6"
POLY PRO PLOW Series 2	8'	29"	⅜" poly	4	1	7	1½" x 10"	6'11"	690 lb	cast iron	⅝" x 6"
PRO PLUS®	8'	31½"	12	4	2	8	1½" x 12"	6'11"	805 lb*	cast iron	½" x 6"
PRO PLUS	8½'	31½"	12	4	2	8	1½" x 12"	7'4"	821 lb*	cast iron	½" x 6"
PRO PLUS	9'	31½"	12	4	2	8	1½" x 12"	7'9"	837 lb*	cast iron	½" x 6"
HEAVYWEIGHT	10'	33"	7	6	2	6	2" x 16"	8'8"	1106 lb	cast iron	½" x 6"
HINGED / WINGED BLADES											
Plow Type	Blade Width	Blade Height	Blade Gauge	Trip Springs	Shock Absorbers	Vertical Ribs	Angling Rams	Plowing Width (full angle)	Approx. Weight (less mount)	Disc Shoes	Cutting Edge
PRODIGY™	8'7" scoop 9'8" wings pinned	29½"	12	4	optional	8	1½" x 10"	7'10"	880 lb*	optional	½" x 6"
WIDE-OUT™ (adjustable wing)	8' retracted 10' expanded 8'10" scoop	29"	12	4	-	6	1½" x 10"	7'2" retracted 9' expanded 7'11" scoop	940 lb	optional	½" x 6" blade 1½" x 8" poly wing
MVP PLUS™	7½'	29"	14	4	-	6	1¾" x 11"	6'6"	827 lb	optional	⅝" x 6"
MVP PLUS	8½'	29"	14	4	-	8	1¾" x 11"	7'5"	880 lb	optional	⅝" x 6"
MVP PLUS	9½'	31"	14	6	-	8	1¾" x 11"	8'3"	988 lb	optional	½" x 6"
MVP PLUS Poly	7½'	29"	¼" poly	4	-	6	1¾" x 11"	6'6"	799 lb	optional	⅝" x 6"
MVP PLUS Poly	8½'	29"	¼" poly	4	-	8	1¾" x 11"	7'5"	847 lb	optional	⅝" x 6"
MVP PLUS Poly	9½'	31"	¼" poly	6	-	8	1¾" x 11"	8'3"	946 lb	optional	½" x 6"
MVP 3™	7½'	37" at end 31" hinge	14	4	-	6	1¾" x 11"	6'7" full angle 6'4" scoop 6'10" full V	892 lb	optional	⅝" x 6"
MVP 3	8½'	38" at end 31" hinge	14	4	-	8	1¾" x 11"	7'5" full angle 7'2" scoop 7'8" full V	946 lb	optional	⅝" x 6"
MVP 3	9½'	39" at end 31" hinge	14	6	-	8	1¾" x 11"	8'6" full angle 8'2" scoop 8'7" full V	1022 lb	optional	½" x 6"
MVP 3 Poly	7½'	37" at end 31" hinge	¼" poly	4	-	6	1¾" x 11"	6'7" full angle 6'4" scoop 6'10" full V	854 lb	optional	⅝" x 6"
MVP 3 Poly	8½'	38" at end 31" hinge	¼" poly	4	-	8	1¾" x 11"	7'5" full angle 7'2" scoop 7'8" full V	902 lb	optional	⅝" x 6"
MVP 3 Poly	9½'	39" at end 31" hinge	¼" poly	6	-	8	1¾" x 11"	8'6" full angle 8'2" scoop 8'7" full V	972 lb	optional	½" x 6"

\*Deduct approximately 40 lb. for skid-steer model.

UltraMount® and UltraMount® 2 mount weight range: 33 to 115 lb. HEAVYWEIGHT plows are available with the UniMount® system.

All plows include:

Low-profile, dual-beam halogen headlamps with combination park/turn signal lights that conform to federal safety standards.

Vehicle light switch activates plow lights—no separate in-cab switch is needed.

Blade guides for improved operator visibility and blade positioning.

## Western Products Offers a Full Line of Snow & Ice Control Equipment

### PILE DRIVER™ CONTAINMENT PLOW

For the really big jobs, WESTERN® offers a full line of heavy-duty containment plows designed to move maximum yards of snow in minimal time. The PILE DRIVER containment plow attaches quickly and easily to either a skid-steer, backhoe or wheel loader. They are available in widths from 8' to 16'.



## Ice Control Equipment

Quality ice control equipment is essential to providing the conditions your customers demand.



Tornado™ Hopper Spreader

### HOPPER SPREADERS

For large areas, the performance of a WESTERN hopper spreader can't be beat. Choose from poly or steel-sided models.



2500 Low Profile Tailgate Spreader

### TAILGATE AND WALK-BEHIND SPREADERS

WESTERN offers a full line of tailgate spreaders and walk-behind models.

See our separate Containment Plow and Spreader brochures for more details.





Follow Us:



See dealer for details

Western Products • P.O. Box 245038 • Milwaukee, WI 53224-9538 • [www.westernplows.com](http://www.westernplows.com)

Western Products reserves the right under its product improvement policy to change construction or design details and furnish equipment when so altered without reference to illustrations or specifications used. Western Products or the vehicle manufacturer may require or recommend optional equipment for snow removal. Do not exceed vehicle ratings with a snowplow. This product is manufactured under the following U.S. patents: 5,638,618; 5,899,007; 6,145,222; 6,209,231; 6,253,470; 6,408,549; 6,412,199; 6,526,677; 6,711,837; 6,928,757; 7,134,227; 7,400,058; 7,430,821; 7,737,576; CAN patents 2,184,922; 2,229,783; 2,354,257; 2,358,145; 2,358,354; 2,639,052; and other patents pending. Western Products offers a limited warranty for all snowplows and accessories. See separately printed page for this important information. The following are registered (®) or unregistered (™) trademarks of Douglas Dynamics, L.L.C.: CONTRACTOR GRADE®, HTS™, MIDWEIGHT™, MVP 3™, MVP PLUS™, NIGHTHAWK™, PILE DRIVER™, POLY PRO-PLOW® Series 2, PRODIGY™, PRO-PLOW® Series 2, PRO PLUS®, Roll-Action™, SECURITY GUARD™, Tornado™, ULTRAFINISH™, UltraMount®, UltraMount® 2, UniMount®, WESTERN® and WIDE-OUT™.

©2013 Douglas Dynamics, L.L.C.  
All rights reserved.  
Form No. 50889

 A DIVISION OF DOUGLAS DYNAMICS, L.L.C.



Printed on recycled paper

Printed in U.S.A. 4/13