



PLATFORM BODIES



www.knapheide.com

YOUR WORK. YOUR VEHICLE. TRUST



KNAPHEIDE PLATFORM BODIES

Knapheide has been designing and manufacturing Platform Bodies since the introduction of the Model T. Today, Knapheide continues to produce the highest quality platforms available.

With selections tailored to various duty cycles, there is a Knapheide Platform Body for any application.

VALUE-MASTER-X™

Knapheide's most popular platform, the PVMX, is a value-priced standard duty platform with distinctive tail skirt styling. It has been engineered to work in both hoist and non-hoist applications.

PVMX models are available in 7' to 26' lengths and for all size chassis.



*Body may be shown with optional features

STANDARD FEATURES

- Flooring options:
 - Wood flooring – 2" nominal treated #1 grade dense yellow pine with tongue and groove construction
 - Smooth steel – 10 gauge high strength (50,000 psi yield strength)
 - Tread plate – 1/8" tread plate
- Structural long sills with gusseted cross members
 - 5" on 12' and shorter platforms
 - 7" on 13' and longer platforms
 - 4" for SRW (80 Series) platforms
- Formed 11 gauge high strength (50,000 psi) cross members are spaced on 18" centers for 12' and shorter platforms and 12" centers on 13' and longer platforms

- Side rails and end rails are constructed of formed 12 gauge high strength steel (50,000 psi)
- Reinforced, internal stake pockets are sized to accept 2"x4" lumber as well as a wide array of Knapheide side options
- All clearance and marker lights meet FMVSS 108 requirements
- Complete immersion in Knapheide's electrodeposition prime paint system for superior corrosion resistance
- Water-based undercoating on underside of platform
- Durable oven-cured high gloss black finish top coat

* Chassis-specific models available for Ford Transit and Ram ProMaster chassis cab

SPECIFICATIONS

Length	CA	SRW Models			DRW Models		
		Wood	Smooth Steel	Treadplate	Wood	Smooth Steel	Treadplate
7'3"	34"–50"	PVMX-738C	PVMXS-738C	PVMXT-738C			
8'3"	56"–60"	PVMX-838C	PVMXS-838C	PVMXT-838C	PVMX-83C	PVMXS-83C	PVMXT-83C
9'3"	60"	PVMX-938C	PVMXS-938C	PVMXT-938C	PVMX-93C	PVMXS-93C	PVMXT-93C
10'3"	72"–84"				PVMX-103C	PVMXS-103C	PVMXT-103C
11'3"	84"				PVMX-113C	PVMXS-113C	PVMXT-113C
12'3"	84"–102"				PVMX-123C	PVMXS-123C	PVMXT-123C
13'3"	108"				PVMX-133C	PVMXS-133C	PVMXT-133C
14'3"	102"–124"				PVMX(W)-143C	PVMX(W)S-143C	PVMX(W)T-143C
16'3"	108"–138"				PVMX(W)-163C	PVMX(W)S-163C	PVMX(W)T-163C
18'3"	120"–152"				PVMX(W)-183C	PVMX(W)S-183C	PVMX(W)T-183C
20'3"	136"–168"				PVMX(W)-203C	PVMX(W)S-203C	PVMX(W)T-203C
22'3"	144"–192"				PVMX(W)-223C	PVMX(W)S-223C	PVMX(W)T-223C
24'3"	158"–196"				PVMX(W)-243C	PVMX(W)S-243C	PVMX(W)T-243C
26'3"	196"–270"				PVMX(W)-263C	PVMX(W)S-263C	PVMX(W)T-263C

* Models with (W) denotes 102" nominal width

HEAVY-HAULER JUNIOR™

The PHHJ is a durable standard duty platform with distinctive tail skirt styling and rub rails. It has been engineered to work in both hoist and non-hoist applications.

PHHJ models are available in 9' to 26' lengths and are compatible with dual rear wheel chassis.



*Body may be shown with optional features

STANDARD FEATURES

- Flooring options:
 - Wood flooring – 2" nominal treated #1 grade dense yellow pine with tongue and groove construction
 - Smooth steel – 10 gauge high strength (50,000 psi yield strength)
 - Tread plate – 1/8" tread plate
- Structural long sills with gusseted cross members
 - 5" on 12' and shorter platforms
 - 7" on 13' and longer platforms
- Formed 11 gauge high strength (50,000 psi) cross members are spaced on 16" centers for 12' and shorter platforms and 12" centers on 14' and longer platforms
- Side rails and end rails are constructed of formed 12 gauge high strength steel (50,000 psi)
- Reinforced, internal stake pockets are sized to accept 2"x4" lumber as well as a wide array of Knapheide side options
- All clearance and marker lights meet FMVSS 108 requirements
- Complete immersion in Knapheide's electrodeposition prime paint system for superior corrosion resistance
- Water-based undercoating on underside of platform
- Durable oven-cured high gloss black finish top coat

SPECIFICATIONS

Length	CA	DRW Models		
		Wood	Smooth Steel	Treadplate
9'3"	60"	PHHJ-93B	PHHJS-93B	PHHJT-93B
11'3"	72"–84"	PHHJ-113B	PHHJS-113B	PHHJT-113B
12'3"	84"–102"	PHHJ-123B	PHHJS-123B	PHHJT-123B
14'3"	102"–124"	PHHJ-143B	PHHJS-143B	PHHJT-143B
16'3"	108"–138"	PHHJ-163B	PHHJS-163B	PHHJT-163B
18'3"	120"–152"	PHHJ-183B	PHHJS-183B	PHHJT-183B
20'3"	136"–168"	PHHJ-203B	PHHJS-203B	PHHJT-203B
22'3"	144"–192"	PHHJ-223B	PHHJS-223B	PHHJT-223B
24'3"	158"–196"	PHHJ-243B	PHHJS-243B	PHHJT-243B
26'3"	196"–270"	PHHJ-263B	PHHJS-263B	PHHJT-263B



CARGO-HAULER™

Knapheide's PCH platform has a robust understructure to withstand tough jobsite applications. The PCH is a heavy duty platform with distinctive tail skirt styling. It has been engineered to work in both hoist and non-hoist applications.

PCH models are available in 12' to 26' lengths and are compatible with dual rear wheel chassis.



*Body may be shown with optional features

STANDARD FEATURES

- Flooring options:
 - Wood flooring – 2" nominal treated #1 grade dense yellow pine with tongue and groove construction
 - Smooth steel – 7 gauge mild steel (36,000 psi yield strength)
 - Tread plate – 3/16" tread plate
- Structural channel long sills with gusseted cross members
 - 5" on 12' and shorter platforms
 - 7" on 14' and longer platforms
- Structural channel cross members are spaced on 12" centers
- Side rails and end rails are constructed of formed 7 gauge mild steel (36,000 psi)
- Reinforced, internal stake pockets are sized to accept 2"x4" lumber as well as a wide array of Knapheide side options
- All clearance and marker lights meet FMVSS 108 requirements
- Complete immersion in Knapheide's electrodeposition prime paint system for superior corrosion resistance
- Water-based undercoating on underside of platform
- Durable oven-cured high gloss black finish top coat

SPECIFICATIONS

Length	CA	DRW Models		
		Wood	Smooth Steel	Treadplate
12'3"	84"–102"	PCH-123B	PCHS-123B	PCHT-123B
13'3"	84"–102"	PCH-133B	PCHS-133B	PCHT-133B
14'3"	102"–124"	PCH-143B	PCHS-143B	PCHT-143B
16'3"	108"–138"	PCH-163B	PCHS-163B	PCHT-163B
18'3"	120"–152"	PCH-183B	PCHS-183B	PCHT-183B
20'3"	136"–168"	PCH-203B	PCHS-203B	PCHT-203B
22'3"	144"–192"	PCH-223B	PCHS-223B	PCHT-223B
24'3"	158"–196"	PCH-243B	PCHS-243B	PCHT-243B
26'3"	196"–270"	PCH-263B	PCHS-263B	PCHT-263B

HEAVY-HAULER™

The PHH is Knapheide's most rugged platform, designed to handle the most severe of hauling applications. It has been engineered to work in both hoist and non-hoist applications.

PHH models are available in 12' to 26' lengths and are compatible with dual rear wheel chassis.



*Body may be shown with optional features

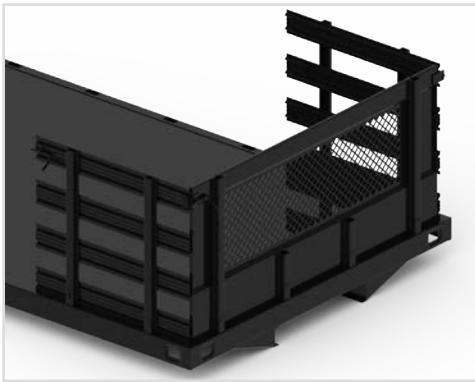
STANDARD FEATURES

- Flooring options:
 - Wood flooring – 2" nominal treated #1 grade dense yellow pine with tongue and groove construction
 - Smooth steel – 7 gauge mild steel (36,000 psi yield strength)
 - Tread plate – 3/16" tread plate
- Structural long sills with gusseted cross members
 - 5" on 12' and shorter platforms
 - 7" on 14' and longer platforms
- Structural channel cross members are spaced on 12" centers
- Side rails and end rails are constructed of structural C channel steel
- Heavy duty reinforced external stake pockets are sized to accept 2"x4" lumber as well as a wide array of Knapheide side options
- External rub rails constructed of 3/8" steel located on both sides of the platform
- All clearance and marker lights meet FMVSS 108 requirements
- Complete immersion in Knapheide's electrodeposition prime paint system for superior corrosion resistance
- Water-based undercoating on underside of platform
- Durable oven-cured high gloss black finish top coat

SPECIFICATIONS

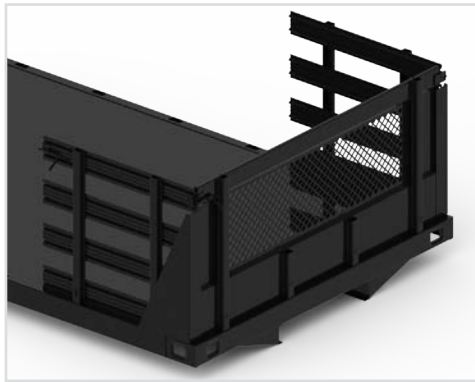
Length	CA	DRW Models		
		Wood	Smooth Steel	Treadplate
12'4"	84"–102"	PHH-124B	PHHS-124B	PHHT-124B
14'4"	102"–124"	PHH-144B	PHHS-144B	PHHT-144B
16'4"	108"–134"	PHH-164B	PHHS-164B	PHHT-164B
18'4"	131"–152"	PHH-184B	PHHS-184B	PHHT-184B
20'4"	146"–168"	PHH-204B	PHHS-204B	PHHT-204B
22'4"	160"–192"	PHH-224B	PHHS-224B	PHHT-224B
24'4"	174"–196"	PHH-244B	PHHS-244B	PHHT-244B
26'4"	196"–270"	PHH-264B	PHHS-264B	PHHT-264B

AVAILABLE BULKHEADS



BH SERIES

- Rectangular bulkhead
- Drop in style with punched window
 - Compatible with all platforms, recommended for stake racks
- Bulkhead material: 11 gauge high strength steel (56" models are 10 gauge)
- Vertical post material: 13 gauge high strength steel



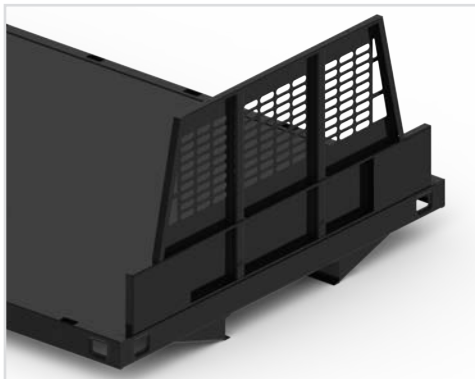
BHG SERIES

- Rectangular bulkhead
- Drop in style with punched window and attached gussets
 - Compatible with all platforms, recommended for stake racks
- Bulkhead material: 11 gauge high strength steel (56" models are 10 gauge)
- Vertical post material: 13 gauge high strength steel



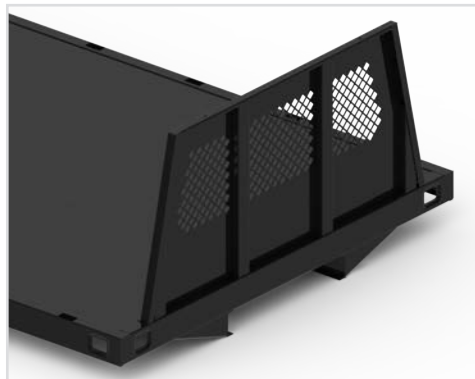
BHR AND BHRB SERIES

- Rectangular bulkhead – heavy duty reinforced
- Weld on (BHR) and bolt on (BHRB) style with punched window
 - Compatible with all platforms
- Bulkhead material: 11 gauge high strength steel (56" models are 10 gauge)
- Vertical post material: 11 gauge high strength steel outer post, 3" structural channel inner post



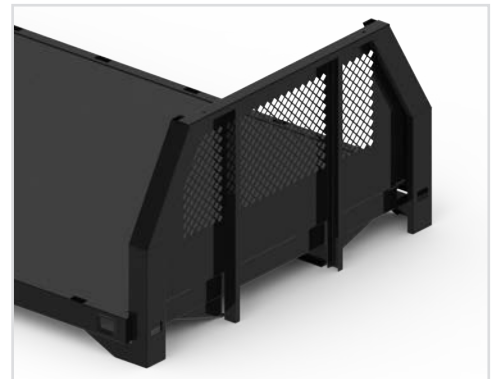
BHTS SERIES

- Westerner bulkhead
- Drop in style with punched window
 - Styled for Westerner
 - Compatible with all platforms, compatible only with 6", 12" and 28" racks
- Bulkhead material: 14 gauge high strength steel
- Vertical post material: 13 gauge high strength steel



BHT SERIES

- Tapered bulkhead
- Drop in style with punched window and attached gussets
 - Compatible with all platforms, not compatible with racks or grain sides
- Bulkhead material: 11 gauge high strength steel
- Vertical post material: 13 gauge high strength steel



BHRT SERIES

- Rectangular bulkhead
- Heavy duty reinforced weld on style with punched window
 - Compatible with all platforms, not compatible with racks or grain sides
- Bulkhead material: 11 gauge high strength steel
- Vertical post material: 13 gauge high strength steel outer post, 3" structural channel inner post

*All bulkheads are primed with electrodeposition gray epoxy paint and finish coated with oven-cured black enamel paint.

See Platform price pages for model specific information and applications.

SIDE ACCESSORIES



STAKE RACKS

Stake racks are compatible with all Knapheide platforms. Choose between interlocking clip or quiet latch stake racks. Racks are completely immersed in Knapheide's electrodeposition prime paint system, and have a black painted finish.

Stake racks are available in 28" or 40" high sides.



REFUSE SIDES

Refuse sides are compatible with the PVMX series platforms and the BH4096C bulkhead. Rear doors are equipped with a latch and bail system, pivot up to 270 degrees and can be secured in the open or closed position.

Refuse sides are available in solid or partially punched versions.



SOLID SIDES

Solid sides are compatible with all the PVMX series platforms. Racks are completely immersed in Knapheide's electrodeposition prime paint system. Solid sides can be used for a wide variety of applications.

Solid sides are available in 40" height, 9' and 12' lengths only.



CONTRACTOR E-Z LOADER DROP SIDE PACKAGE

Drop Side Contractor packages are compatible with PVMX and PCH series platforms. Each side drops down to a full 180 degrees for easy access. Sides feature 45 degree slatted rub rails. The tailgate is double acting and features a quick release handle for easy operation.

Drop sides are available in lengths from 8' up to 12'.



CONTRACTOR FIXED SIDE PACKAGE

Fixed Side Contractor packages are compatible with PVMX and PCH series platforms up to 16' in length. 14" high sides and stake pocket model bulkhead are standard. Tailgate may be lowered and secured parallel to the ground, dropped down to 180 degrees or removed completely.

KNAPHOIST

- Rugged, stable lift arm constructed of 3/4" thick high tensile strength steel
- Patented "Lost Motion Device" provides low mounting height resulting in greater stability
- High pressure, double-acting cylinder(s) for improved control of load when dumping
- Threaded cylinder gland cap prevents cylinder damage in "load over center" conditions



- Automatic body bracing positioning
- 3 year warranty

ROUGHNECK TOOLBOXES

- Refined, automotive quality, paddle activated rotary style latches make opening and closing easy. Low maintenance and stylish, the latches are covered under Knapheide's six year warranty.
- Adjustable security ring striker provides strength, security, and weather-tight sealing
- All stainless steel continuous hinge provides superior corrosion protection while offering full length support for the doors and pry proof security
- Continuous door seal protects against water, dirt and dust
- Extra heavy duty door chains installed
- Automotive grade, high gloss top coat
 - Above body toolbox available in white or black, under body toolbox available in black



POPULAR OPTIONS

- 10 gauge or 7 gauge smooth steel over wood overlay flooring
- 1/8" or 3/16" steel tread plate over wood overlay flooring
- Apitong hardwood or polyboard flooring in lieu of yellow pine
- Bulkhead models available in 35", 40", 44", 48" or 56" high
- Class V receiver hitch
- Knap Pack
- LED light kits for rear and side lights
- Underbody storage compartment available in 8' or 10' lengths
- Rope hooks located on cross sills for securing cargo
- D-ring cargo tie downs for securing cargo
- Rear stake pockets and side rub rails
 - Available for Heavy-Hauler only



Since 1848, The Knapheide Manufacturing Company has continued to be an industry leader, with a vast distribution network and expert staff ready to help.



COMMITMENT TO CORROSION RESISTANCE

Corrosion shouldn't be a concern when you buy quality Knapheide products. To give you the best protection from corrosion, we installed our state-of-the-art, custom-designed electrodeposition prime paint system. Our E-coat system bonds prime paint to steel by an electroplating process, to give you a superior coat of primer resulting in better corrosion protection compared to spraying methods. Complete immersion in our E-coat results in a prime coat that provides the best chemical and solvent resistance. Because of our commitment to corrosion resistance, you should never worry about the quality of your Knapheide products.




- No Rust Through
- Free from Defects in Workmanship
- Free from Defects in Materials



SINCE 1848

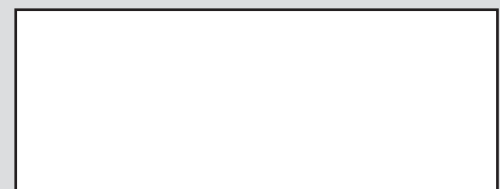
The Knapheide Manufacturing Company
1848 Westphalia Strasse | Quincy, Illinois 62305

(217) 222-7131

 www.knapheide.com

 knapheide@knapheide.com

For more information:



Specifications subject to change without notice.
Some models shown with optional equipment.